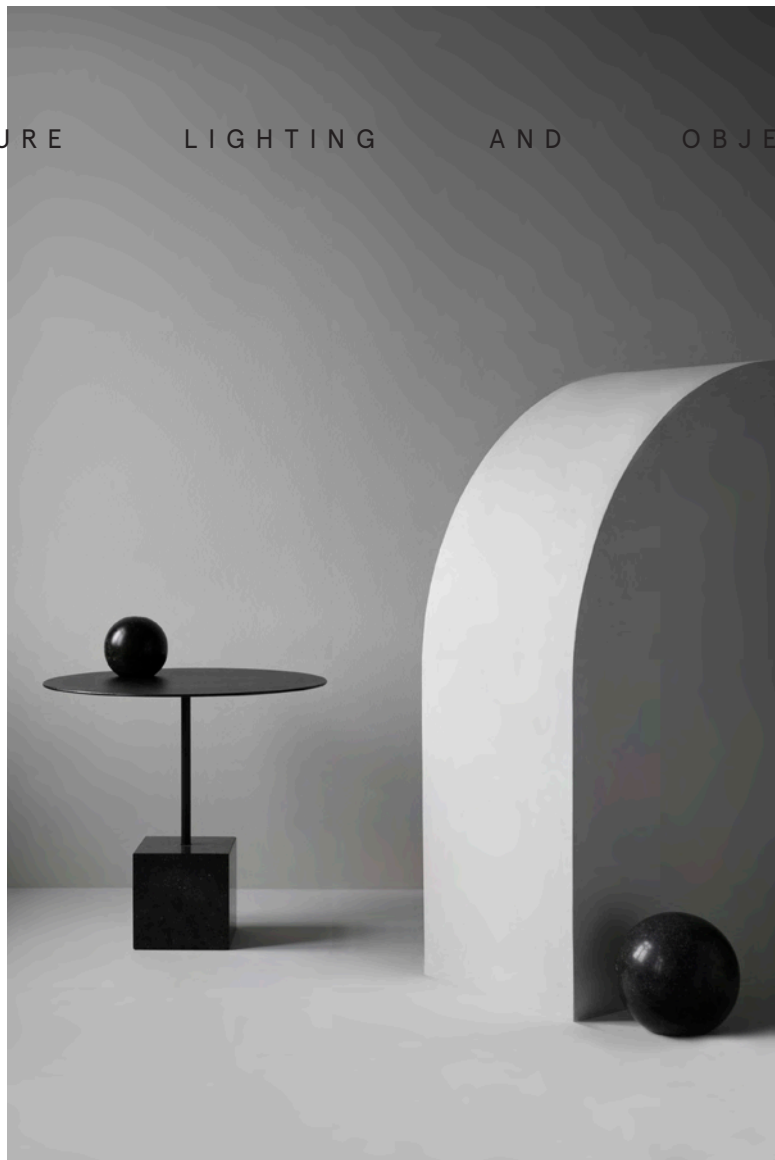


VOL I

CATALOGUE - LOOK BOOK

FURNITURE LIGHTING AND OBJECTS



FRIENDS

FOUNDERS



FRIENDS  
FOUNDERS

IF MOMENTS OF INSPIRATION ARE WORKS OF ART,  
WE SET THE STAGE FOR INDIVIDUALITY.  
WE BUILD A CONTEMPORARY FRAME FOR  
WE CREATE LAYERS, EACH WITH AN IDENTITY,

FRIENDS & FOUNDERS CREATES ORIGINALS.  
WE MAKE SPACE FOR YOU TO BE MORE YOU.  
THE DIVERSITY OF LIFE.  
THAT MAKE A WHOLE THAT MATTERS.

CONTENTS

6

FOUNDERS' LETTER

The adventurous path of building something new

8

HOME OF AN ARTIST

A place for the painters of the Danish Golden Age

12

COLLECTION

Featuring timeless pieces guided by the simplicity of  
artistic minimalism

128

INTERVIEW

Designer notes by Ida L. Hildebrand

132

TEXTURES

The perception of shapes

136

SELECTED FABRICS

The expression of Art, Elegance and Poetry

154

SUSTAINABILITY

Design with the future in mind

156

COLLECTION INDEX

Experience the full range of Furniture, Objects & Lighting



## FOUNDERS' LETTER

Dear Admirer of Fine Furniture,

We met during the 2008 Stockholm Design Week. I came from Copenhagen where I had worked for years within the field of furniture design. Ida, the now-designer behind Friends & Founders' creations, had just graduated from the Stockholm art institute Konstfack. Ida and I first connected in the obvious way: We both loved architecture and great design. But we soon discovered another resonance. We both loved life. We cherished moments of laughter, cheer, good food, and adventure with friends and family. And that's where it all began. We started a romance that would radically change both our personal and professional lives. Our relation gave birth to Friends & Founders.

### DEVOTION HAS DRIVEN OUR WORK FROM THE START, WORK FOUNDED IN ROMANCE.

Not long after meeting we began to dream about furniture design. As we discussed ideas we realized that with our combined abilities and experiences we could create something significant. And we had the courage to give it a try, to start on the adventurous path of building a furniture company from scratch. We opened a studio in the north of Copenhagen in 2013 and that year established our contemporary designer brand – Friends & Founders.

Actually, we feel the name Friends & Founders explains our philosophical perspective on this business quite well. We believe the best work in furniture, design and architecture is collaborative. And the relationships formed in that collaboration work best when grounded in honesty, trust, and a long-term view. When we work closely with customers, manufacturers, and other creators we find that new exciting ideas come to life. I like to think our name is an invitation to work together in creating brilliant and striking designs of the stages where our lives play out.

Friends & Founders is now an established and well-respected provider of high-end furniture, lighting, and accessories. Our award-winning creations have strong influences from the Scandinavian design heritage. But our aesthetic and structural concepts have diverse inspirations which make them truly distinct. And our brand has gained international recognition because of a determination to realize original concepts in the end results – pieces of high quality and uncompromising design.

Bringing a creative idea to life is a process that drives us, and we want those ideas to be inspirations for others. To protect that process Friends & Founders has a hand in each step of creation: from idea to design, from production to packaging and delivery.

We know many designers don't have that experience. At some point they have to hand over their creations, and those are frequently changed by the pressures of business and logistics. Early on we decided it was crucial to consider each part of the process in bringing our pieces to life. We hope that extra attention means our work can grace the rooms in which you host friends and families for just as long as classics from Jacobsen, Alto, or Wegner.

### WE CREATE CONTEMPORARY DESIGN WITH STRONG FOCUSES ON ARCHITECTURE, ART, AND CRAFT.

Friends & Founders' contemporary collection shows off extravagant, crafted detailing which attests to the designer Ida's careful eye. Our collections are manufactured in Scandinavia and Europe by skilled craftsmen who come from a long tradition of high-quality furniture-making. The collections have distinct aesthetic signatures with influences from 20th century artistic movements. Ida begins her process with ideas founded in the artistic paradigm of geometric abstraction. Her designs have roots in modernism and the Bauhaus movement's functionalist ideologies, often associated with minimalism.

Our design process always considers the future of the piece. That means we carefully select materials and processes so as to be as conscientious about their impact as possible. A key to our sustainability philosophy is creating products that last. We carefully choose materials in order to extend the life of a product seen from the perspectives of aesthetics, functionality, and sustainability. We also believe in a production cycle of use, re-use, and material re-cycle after a product's useful life is over. That holistic view informs our designs. Furniture shouldn't be designed to go out of style with the seasons but to be durable and have a lasting beauty – to be objects you can live with.

Our creative inspiration comes from art, architecture, culture, and everyday life. But it also comes from meeting others, especially all the passionate and uncompromising people out there who are masters in their own right. They're people like us, makers and doers who won't take shortcuts. They can be creators or entrepreneurs or experts. And we take inspiration from them as much as we like to think we give it, especially if we can help set the stage for their life and work.

We hope you'll find a spark of inspiration here in our classics, novelties, additions, and extensions – pieces with which to fall in love and grow old.

Rasmus Hildebrand, CEO and co-founder of  
Friends & Founders



# THE ARTISTS' HOME

## HOME OF AN ARTIST

Words by Ida L. Hildebrand & Vincent Cavalier  
Photography by Ida L. Hildebrand

Each time I enter the doors of our house I am filled with joy. It's a building whose history reaches back to the 1670s, and now it's our home. But I wouldn't have said that ten years ago when we moved in. At that time it needed a loving touch.

The echoes accentuated its emptiness. There was no furniture, no art, no lighting, no knick-knacks or curios, no toys or small treasures. Now the house is full of children, paintings, furniture, prototypes, sculptures, and books. And it's steeped in memories.

My home is like the frame for my life. It's my place for joy and sorrow, for tranquility and energy. It's the place of my family. And it marks where my family life began, like the raising of a stage curtain. It's not only that. My home is my creative universe and my canvas. It's filled with work and aspiration. Creativity knows no bounds, no schedules. Inspiration sparks when you least expect it. An ember might float into your mind at night, head on pillow and halfway to dreamland. And in an instant you're given a feeling or a fragment on which to build. My home is my workspace and my work, thankfully, is my great passion. Working means creating. And creating is living. It offers a sort of freedom.

My home is full of life. Voices, sounds, smells, and movement. Cutlery clinks the marble table several times a day.

Laughter jumps from floor to floor. It's rarely quiet during the days. Only at night does a veil of tranquility settle about the house. And at daybreak the house quickens again, when the light's returned.

I love the light in our home. It comes in through the many paned windows whose glass is old and which let daylight flow into the home with its own character.

A CENTURY AGO OUR STUDIO WAS A PLACE FOR ARTISTS – PAINTERS OF THE DANISH GOLDEN AGE.

You can still feel the desire for creativity, still feel the presence of those artists who worked passionately and insistently into the night even when daylight had long since disappeared. The blue hour of dusk gently blurs the contours in our home so you might barely notice its powerful magic as you worked.

The revelatory, authenticating power of daylight was a reason that I became interested in photography. Sunlight has the power to intensify and define an object. And in a room this process is borne out with the contrasts of shadow and light in its various shades.

With this play in mind my designs for the Friends & Founders' collection were captured in a natural light which imparts to them a softness. I created the photographs myself, and I think you'll appreciate that the settings are authentic.

They are my home, my studio, my atelier. Welcome to my universe.



PAINTERS STUDIO  
FLOW OF LIGHT



WELCOME TO MY  
UNIVERSE



# THE COLLECTION


ART CRAFT AND  
ARCHITECTURE

FRIENDS FOUNDERS create contemporary designs with strong focuses on architecture, art, and craft. We strive to create timeless pieces and are guided by the simplicity of artistic minimalism. Our sculptural approach to furniture design, clean aesthetic profiles, and attention to detail show through in our work.

Our creations are made in Scandinavia and Europe by skilled craftsmen with high standards of quality. The DNA of our pieces has evolved from Scandinavian tradition and a heritage of precise and innovative craftsmanship.

We reinterpret Scandinavian design by pairing its traditional emphases with more contemporary and international influences. In so doing we define a new Scandinavian modernism.

FRIENDS & FOUNDERS AIMS TO BE A SOURCE OF  
INSPIRATION AND PASSION.  
OUR COLLECTION PRESENTS BOTH  
MODERN CLASSICS AND NOVELTIES,  
PIECES WITH WHICH TO FALL IN LOVE  
AND GROW OLD.



GET INSPIRED AND SHARE WITH OTHERS

## COLLECTION

### FURNITURE

PIPE  
PIPE WOOD  
PIPE LOUNGE  
NOVEL CHAIR  
FF CHAIR  
FF CANTILEVER  
MY CHAIR  
OUR BENCH  
KNOCKOUT  
SAW  
POND  
SHELVISH

### LIGHTING

PARIS NIGHTS  
LA LAMPE  
BOXER

### OBJECTS

CASTLE  
MIRÓ MIRÓ  
ARC  
STAND OUT

# PIPE

**PIPE EMERGED FROM DESIGNER IDA HILDEBRAND'S PASSION FOR ELEGANT FORM AND STRONG SILHOUETTES. THE CONCEPT TOOK SHAPE WITH FRIENDS & FOUNDERS' EXPERTISE IN USING MODERN PRODUCTION TO ACHIEVE HIGH CRAFTSMANSHIP AND EXQUISITE DETAILING. IN THE PIPE CHAIR THE DESIGNER'S EMPHASIS ON BALANCE AND COMFORT CREATED AN ELEGANT EXPERIENCE AND ONE MADE TO LAST.**

PIPE was named to evoke parts of a functional whole like the stem and bowl of a tobacco pipe. Each component has design and a valuable purpose. Besides this, the silhouette of the chair "the piping" has striking similarity to the shape of a well-crafted, handmade pipe.

From all angles the chair's extravagant, organic shape shows off beautiful detailing which underlines the thoughtful work of the designer. The generous space of the chair offers excellent comfort while the graceful shape embraces you.

Pipe chair shows great craftsmanship in its details. And the back legs of the frame support the shape of the shell which enhance the characteristic form and outline of the armrest.

A thin, elegant frame supports the chair in a way that integrates a light feel with robust strength. The geometry allows a sturdy design without reinforcement. That means reduced weight and material use, benefits from the perspectives of sustainability as well as function.

The PIPE collection comes in a variety of upholstery options. Friends & Founders' UPHOLSTERY collection offers a wide range of sustainable fabrics and leathers for contract and residential use. The SELECTED collection features exclusive offerings for higher-end interior designs.

**THE COLLECTION FEATURES A DINING CHAIR, COUNTER CHAIR, BARSTOOL AND A LOUNGE CHAIR.**

THE GENEROUS SPACE OF THE CHAIR  
OFFERS EXCELLENT COMFORT WHILE  
THE GRACEFUL SHAPE EMBRACES YOU.



LA PIPE CHAIR featured in new desirable fabrics characterized by rich textures from SAHCO and DEDAR. From left LA PIPE CHAIR in A JOY fabric from DEDAR. In the centre LA PIPE in REED from SAHCO. To the right LA PIPE in XYLOPHONE canvas fabric, also from DEDAR.





ATMOSPHERE FOR A NEW CONTEMPORARY MID-CENTURY.

To the right LA PIPE in A JOY fabric from DEDAR and in REED from SAHCO. Accompanied by KNOCKOUT DINING TABLE in BLACK MARQUINA MARBLE and PARIS NIGHTS pendant lamp in mouth blown glass. Above LA PIPE in XYLOPHONE canvas fabric from DEDAR.



LA PIPE CHAIR COLLECTION FEATURES A DINING CHAIR, COUNTER CHAIR, BARSTOOL AND A LOUNGE CHAIR. ABOVE the collection of CHAIR and HIGH CHAIRS in striped VELVET from NOBILIS. OPPOSITE: LA PIPE in a setting around KNOCKOUT DINING TABLE in BLACK MARQUINA MARBLE and PARIS NIGHTS pendant lamp in mouth blown glass.



# PIPE WOOD

**PIPE CHAIR IS RENEWED FEATURING A WOODEN VERSION, TRUE TO SCANDINAVIAN TRADITION. THE SCULPTED, FULLY-UPHOLSTERED SEAT RESTS ON AN ELEGANT, TIMELESS BASE OF WOOD CREATING A NEW EXPERIENCE OF THE PIPE CHAIR.**

PIPE was named to evoke parts of a functional whole like the stem and bowl of a tobacco pipe. Each component has design and a valuable purpose. Besides this, the silhouette of the chair “the piping” has striking similarity to the shape of a well-crafted, handmade pipe.

From all angles the chair’s extravagant, organic shape shows off beautiful detailing which underlines the thoughtful work of the designer. The generous space of the chair offers excellent comfort while the graceful shape embraces you.

Pipe chair shows great craftsmanship in its hand-made upholstery details and frame which enhance the characteristic shape and outline of the armrest.

The elegant frame supports the chair in a way that integrates a light feel with strength.

The outside of the legs have a distinct, sharp edge while the inside is rounded, emphasizing an aesthetic that is simultaneously organic and sculpted.

The geometry allows a sturdy design without reinforcement. That means reduced weight and material use, benefits from the perspectives of sustainability as well as function.

The PIPE collection comes in a variety of upholstery options. Friends & Founders’ UPHOLSTERY collection offers a wide range of sustainable fabrics and leathers for contract and residential use. The SELECTED collection features exclusive offerings for higher-end interior designs.

SEEN IN SILHOUETTE THE CHAIR RESEMBLES  
A HAND-CRAFTED PIPE  
... HELD IN THE HAND OF A DESIGNER, NATURALLY



# PIPE LOUNGE

PIPE LOUNGE SHARES THE SAME CONCEPTUAL THEMES AS THE PIPE CHAIR. YET THE LOUNGE CHAIR LEAVES ITS OWN DISTINCT EXPRESSION AND CREATES A UNIQUE PRESENCE IN ITS SPACE. THE OUTLINE OF ITS SHELL TRACES ARMRESTS AND CONTINUES TO THE FLOOR — A FLOWING DESIGN THAT MEANS NO SUPPORT FRAME IS NEEDED. THE UPHOLSTERED SEAT IS MORE INTEGRATED WITH THE COMPLETE ORGANIC QUALITY OF THE CHAIR. ITS GENEROUS SPACE OFFERS EXTRA COMFORT AND ITS GENTLE ENCLOSURE EMBRACES YOU.

PIPE emerged from designer Ida Hildebrand's passion for elegant form and strong silhouettes. And the concept took shape with Friends & Founders' expertise in using modern production to achieve high craftsmanship and exquisite detailing.

In the PIPE CHAIR the designer's emphasis on balance and comfort created an elegant experience and one made to last.

Creating the PIPE collection presented aesthetic challenges for the designer Ida L. Hildebrand.

"It's not easy to make a piece of furniture with the organic expressions we wanted when you have to balance them with comfort and what's possible from a production standpoint. But the design of PIPE chair achieve these features."

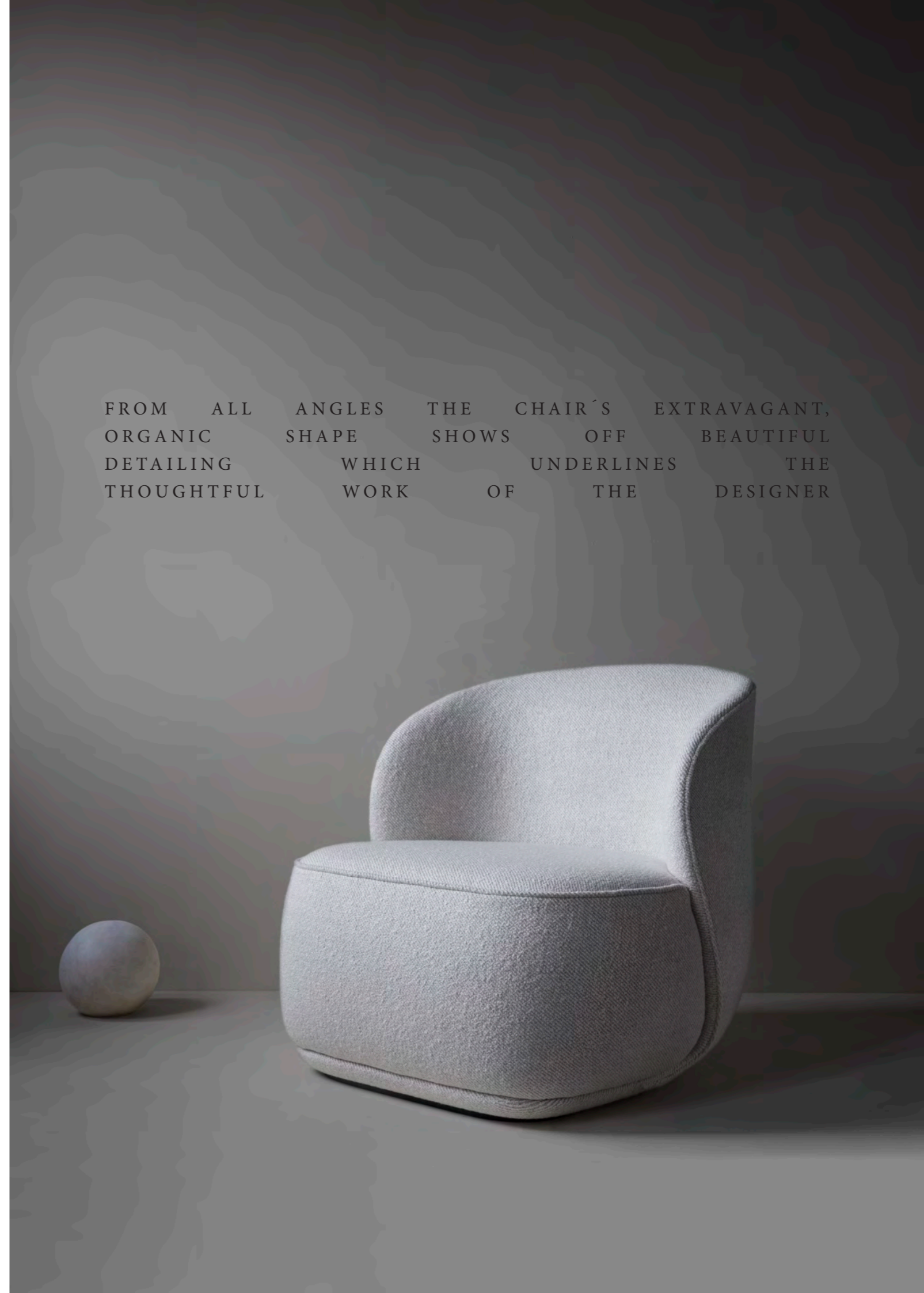
PIPE represents the standard of craftsmanship that Friends & Founders attaches to its brand: unwillingness to compromise. It means creations that stay true to the original aesthetic inspiration while striking a balance between design and functionality.

The PIPE LOUNGE comes in a variety of upholstery options. Friends & Founders' UPHOLSTERY collection offers a wide range of sustainable fabrics and leathers for contract and residential use. The SELECTED collection features exclusive offerings for higher-end interior designs.

The PIPE LOUNGE is available with a fixed base or with a return swivel, features that add an extra dimension to the experience of the seat.

THE COLLECTION FEATURES A DINING CHAIR, COUNTER CHAIR, BARSTOOL AND LOUNGE CHAIR.

FROM ALL ANGLES THE CHAIR'S EXTRAVAGANT,  
ORGANIC SHAPE SHOWS OFF BEAUTIFUL  
DETAILING WHICH UNDERLINES THE  
THOUGHTFUL WORK OF THE DESIGNER



LA PIPE LOUNGE CHAIR featured in KARAKORUM bouclé fabric from DEDAR.  
POND SMALL table in translucent coloured glass in bronze shade.  
PARIS NIGHTS floor lamp in NIGHT BLACK satin finish and mouth blown opal glass.  
ARC LARGE wall mirror in a sophisticated grey-smoke tint.





A WINDOW VIEW WHERE THE NATURAL DAY LIGHT AND GRAY SHADES CREATES A CALM ATMOSPHERE.  
 ABOVE: LA PIPE LOUNGE in Karakorum from Dedar / POND TABLE in Bronze / MIRÓ MIRÓ wall mirror in colour grey mist.  
 OPPOSITE: PIPE LOUNGE in Tiger Mountain fabric from Italian DEDAR. Accompanied by POND TABLE in Bronze and PARIS NIGHTS floor lamp in NIGHT BLACK satin finish and mouth blown opal glass.



ABOVE: LA PIPE LOUNGE in REED from SAHCO / POND TABLE LARGE in Grey  
OPPOSITE: PIPE LOUNGE in A JOY fabric from Italian DEDAR.



# NOVEL

THE FRIENDS & FOUNDERS NOVEL CHAIR IS A STAND-ALONE PIECE WITH CHIC ALLURE. SIMPLICITY, ELEGANCE AND CONFIDENCE CHARACTERIZE THIS CHAIR. ITS DISTINCT ELEMENTS ARE COMBINED INTO A SOPHISTICATED, GEOMETRIC ABSTRACTION.

Stark rectangular elements join the C-shaped back and give the seat a distinguished and contemporary character.

The NOVEL chair takes inspiration from the world of fashion. It's a well-dressed piece of furniture that has a well-defined, "tight" expression. The contrasting, two-colour variant emphasizes the silhouettes and reinforces the outline. It's a chair with a self-assured attitude.

NOVEL comes in a variety of upholstery options. FRIENDS & FOUNDERS' UPHOLSTERY collection offers a wide range of sustainable fabrics and leathers for contract and residential use. The SELECTED collection features exclusive offerings for higher-end interior designs.

NOVEL CHAIR IS A SOLOIST THAT ATTRACTS -  
THE KEY WORDS ARE SIMPLICITY,  
ELEGANCE AND CONFIDENCE





NOVEL CHAIR in REED, geometric fabric from KVADRAT. POND SMALL table in translucent coloured glass with a bronze shade. OPPOSITE: NOVEL CHAIR featured in the SELECTED two coloured versions in black & white VIDAR fabric from KVADRAT.





NOVEL FEATURED IN A SPACE FLOWING IN NATURAL LIGHT  
 ABOVE: NOVEL CHAIR in the SELECTED two coloured version, VIDAR fabric from KVADRAT  
 ARC wall mirror in colour grey mist.  
 NOVEL in light bouclé fabric KARAKORUM from DEDAR next to KNOCKOUT lounge table.  
 OPPOSITE: NOVEL SELECTED accompanied by KNOCKOUT DINING TABLE in BLACK  
 MARQUINA marble and PARIS NIGHTS large pendant lamp in mouth blown opal glass.

# FF CHAIR

DESIGNER IDA LINEA HILDEBRAND CONTINUES HER RELIABLE TRADITION TO USE GEOMETRIC ABSTRACTIONS AS THE FOUNDATION OF HER WORK. THE MINIMALIST DESIGN OF THE FF COLLECTION PARALLELS THE BAUHAUS MOVEMENT'S FUNCTIONALIST IDEOLOGIES. THE FF SERIES HAS A DISTINCTIVE CHARACTER DRAWING ALSO FROM THE SIMPLICITY OF MINIMALISM. ANY SIGHTLINE WILL SHOW OFF THE CHAIRS EXTRAVAGANT DETAILING AND THE DESIGNER'S AESTHETIC VISION.

The FF COLLECTION was developed with a focus on sustainability. At first glance the FF chairs might resemble the common steel-tube chairs that have adorned private and public spaces for generations. But the intention is far more thoughtful and rooted in a consideration of sustainable production in furniture. The FF CHAIR possesses a number of sustainability merits.

In considering durability and the life-cycle of the FF CHAIR the frame was built to last a decade at the very least. As upholstery components become worn or outdated the FF CHAIR was crafted with upholstered parts that can easily be removed and recycled. Without reproducing its structural elements a re-upholstered chair gets a new look and new life.

The chair is manufactured in Northern Europe by skilled craftsmen with a passion for furniture. The FF COLLECTION is a perfect choice for modern settings. It mixes well with mid-century, iconic architecture but can also be suitable in other historical contexts.

The FF collection comes in a variety of upholstery options. Friends & Founders' UPHOLSTERY collection offers a wide range of sustainable fabrics and leathers for contract and residential use. The SELECTED collection features exclusive offerings for higher-end interior designs.

THE COLLECTION FEATURES A DINING CHAIR AND CANTILEVER CHAIR.

THE FF SERIES HAS A DISTINCTIVE CHARACTER THAT  
DRAWS FROM THE SIMPLICITY OF ICONIC MINIMALISM





A SETTING BY A TRUE MINIMALIST

FF CHAIR in rounded upholstery design, covered in DAKAR BLACK aniline leather. The FF COLLECTION is a perfect choice for modern settings. It mixes well with mid-century, iconic architecture as well as other historical contexts.



THE FUNCTIONALIST´S CHOICE  
 ABOVE: FF CANTILEVER CHAIR in CHROME and rounded upholstery design. Featured in REED black and white patterned fabric from KVADRAT. Suitable for both public and residential interiors.  
 OPPOSITE: FF CHAIR presented in high end ROYAL NUBUCK aniline leather with an exquisit subtle texture and a velvety like touch.



FF CHAIR in black frame, featured in A JOY fabric from Dedar. SAW DESK in Black marble and PARIS NIGHTS desk lamp.  
OPPOSITE: FF CHAIR and CANTILEVER in a dining setting presented in high end ROYAL NUBUCK aniline leather with an exquisite subtle texture and a velvety like touch. Next to KNOCKOUT dining table in black Marquina marble.



# MY CHAIR

MY CHAIR IS A CHAIR FOR MANY PURPOSES. DESPITE ITS SHARP, EDGY LOOK IT IS SURPRISINGLY COMFORTABLE. THE CLEAN LINES AND THE BALANCE IN SHAPE AND PROPORTIONS GIVES THE CHAIR ITS DESERVED ATTENTION. THE OPEN BACK AND DISTINCT OUTLINE WELCOME MY CHAIR IN MANY DIFFERENT CONTEXTS. WHILE THE CHAIR DOES ATTRACT THE EYE, IT ALSO WORKS IN HARMONY WITH ITS SURROUNDINGS IN INDOOR AND OUTDOOR SPACES.

With this timeless classic, designer Ida L. Hildebrand aimed to create a furniture collection in a minimalist architectural clean expression.

Key is its open structure backrest. It features a bent metal sheet that is produced using a method also used to make Danish windmills. The backrest's fantastic strength allows for a seamless design. No reinforcement components are necessary.

The collection is made by the hands of skilled craftsmen in Scandinavia with a passion for furniture. The chair is available with an open back or with a refined metal-string weave.

The collection features a custom coating that makes the furniture extremely durable as in all Friends & Founders metal and outdoor products. The powder

coatings are UV-resistant so they are suitable for sunny environments.

A matte and slightly granulated surface-finish gives the collection a sophisticated feel and appearance. The coating has a slight sparkling of minerals that gives the surface more depth and makes the feel softer.

The chair may be adorned with Friends & Founders' MY CUSHION, dressed in exclusive outdoor fabrics from DEDAR.

THE COLLECTION FEATURES A DINING CHAIR, BENCH, AND OUTDOOR CUSHIONS

MY CHAIR IS A TIMELESS CLASSIC,  
CHARACTERIZED BY A DISTINCT, MINIMALISTIC  
DESIGN AND STRONG SILHOUETTES



# OUR BENCH

THE OUR BENCH IS CHARACTERIZED BY A DISTINCT MINIMALISTIC DESIGN AND STRONG SILHOUETTES. THE TWO-AND-A-HALF SEATER SOFA FEATURES CRAFTSMANSHIP THROUGH CAREFULLY DESIGNED DETAILS, MATERIALS AND FINISHES. DESPITE ITS SHARP, EDGY LOOK THE BENCH IS SURPRISINGLY COMFORTABLE. THE CLEAN LINES AND THE BALANCE IN SHAPE AND PROPORTIONS GIVES THE BENCH ITS DESERVED ATTENTION.

The open back and distinct outline welcome OUR BENCH in many different contexts. While the bench does attract the eye, it also works in harmony with its surroundings in indoor and outdoor spaces.

With this timeless, award-winning classic, designer Ida L. Hildebrand aimed to create a furniture collection in a minimalist architectural clean expression. Key is its open structure backrest. It features a bent metal sheet that is produced using a method also used to make Danish windmills. The backrest's fantastic strength allows for a seamless design. No reinforcement components are necessary.

The collection is made by the hands of skilled craftsmen in Scandinavia with a passion for furniture. The sofa is designed with a refined metal-string weave.

The collection features a custom coating that makes the furniture extremely durable as in all Friends & Founders metal and outdoor products. The powder coatings are UV-resistant so they are suitable for sunny environments.

A matte and slightly granulated surface-finish gives the collection a sophisticated feel and appearance. The coating has a slight sparkling of minerals that gives the surface more depth and makes the feel softer.

The bench may be adorned with Friends & Founders' OUR CUSHION, dressed in exclusive outdoor fabrics from DEDAR.

THE COLLECTION FEATURES A DINING CHAIR, BENCH AND OUTDOOR CUSHIONS

## OUR BENCH - HONOURING THE HANDMADE

Comfortable as it is, this classic sofa can be adorned with  
OUR CUSHION, dressed in exclusive outdoor  
fabrics from DEDAR



# KNOCKOUT

CREATED IN 2013 THE KNOCKOUT COLLECTION FEATURES SOME OF THE FIRST DESIGNS FROM FRIENDS & FOUNDERS. THE PIECES HAVE BECOME SYMBOLIC OF THE BRAND AND ARE REPRESENTATIVE OF DESIGNER IDA HILDEBRAND'S GEOMETRIC, ARCHITECTURAL, AND SCULPTURAL INFLUENCES. THIS AWARD-WINNING COLLECTION HAS GAINED ATTENTION FOR ITS CONTEMPORARY AND MINIMALISTIC ARCHITECTURAL PROFILE, ONE THAT BREAKS WITH TRADITION.

The KNOCKOUT tables are attractive both as stand-alones or in clustered groups. Each could hold a favourite item - a teacup, book, tablet. In fact the theme of the collection is accentuating personal moments.

The KNOCKOUT collection suits many spaces and fits well in both public and residential contexts. The pieces are appropriate for a range of building architectures whether historic, mid-century or contemporary.

The KNOCKOUT COLLECTION is manufactured in Europe where the tradition for marble craft is strong. Our selected marble is untreated and leaves a honed, matte, silky finish that is exquisite to the touch.

The table top is made from solid aluminium and so is also suitable for outdoor spaces.

The collection features a custom coating that makes the furniture extremely durable as in all Friends & Founders metal and outdoor products. The powder coatings are UV-resistant so they are suitable for sunny environments.

A matte and slightly granulated surface-finish gives the collection a sophisticated feel and appearance. The coating has a slight sparkling of minerals that gives the surface more depth and makes the feel softer.

THE COLLECTION FEATURES LOUNGE TABLES, HIGH TABLES, AND DINING TABLES

THE KNOCKOUT COLLECTION SHOWCASES A GEOMETRIC PERFORMANCE. BALANCED BY ITS SOLID GEOMETRICAL ACT, THE OBJECTS HAVE A NATURAL, BASIC, YET OBVIOUS APPEARANCE THAT CATCHES THE EYE.





NOVEL CHAIR in Karakorum DEDAR fabric. KNOCKOUT LOUNGE TABLE in a white sphere geometry marble base.  
OPPOSITE: PIPE LOUNGE in Karakorum bouclé accompanied by KNOCKOUT LOUNGE TABLE in black marble  
and handpicked ceramic pieces from the seventies. Carpet from KVADRAT / DANSKINA.





KNOCKOUT COLLECTION FEATURES LOUNGE TABLES, HIGH TABLES, AND DINING TABLES  
The Knockout tables in BLACK MARQUINA and WHITE PELE TIGRE marble, in two different heights - low and high. The collection is also available in the rare Swedish Kolmård marble in green honed finishes. For indoor and outdoor use.



# KNOCKOUT DINING

KNOCKOUT DINING IS AN EXTENSION OF THE POPULAR KNOCKOUT LOUNGE TABLE COLLECTION. THIS AWARD-WINNING COLLECTION HAS GAINED ATTENTION FOR ITS CONTEMPORARY MINIMALISTIC ARCHITECTURAL PROFILE, ONE THAT BREAKS WITH TRADITION.

The luxurious DINING TABLE is made of European marble and metal which is featured in monochrome black or white with optional lavish chrome details.

The KNOCKOUT collection suits many spaces and fits well in both public and residential contexts. The pieces are appropriate for a range of building architectures whether historic, mid-century or contemporary.

Friends & Founders' marble selection are sourced from Europe where the tradition of marble craft is strong. Each marble in the selection has its own characteristic, some with complex streaking and others with more homogenous patterns. At the time of manufacture each slab is carefully chosen.

Friends & Founders' marble pieces have a silky, matte finish which helps enhance the underlying patterns of the raw stone. Because our marble is untreated and honed it leaves an exquisitely silky feel.

Because the raw material comes from nature, inconsistencies in markings are typical and often desirable because of their uniqueness. While all marble can gradually wear or become discoloured, with proper treatment and maintenance marble looks stunning for years and grows an even, warm patina.

THE COLLECTION FEATURES LOUNGE TABLES, HIGH TABLES AND DINING TABLES

THE ICONIC KNOCKOUT COLLECTION  
REPRESENT DESIGNER IDA L. HILDEBRAND'S  
GEOMETRIC, ARCHITECTURAL,  
AND SCULPTURAL INFLUENCES





KNOCKOUT DINING in CHROME finish and BLACK MARQUINA marble.  
 LA PIPE CHAIR in black frame with A JOY twill fabric from Dedar.  
 OPPOSITE: NOVEL CHAIR SELECTED. ARC LARGE wall mirror in grey mist shade.  
 The settings are flavoured with PARIS NIGHTS lighting.



KNOCKOUT DINING in black finish and BLACK MARQUINA marble with white veins. LA PIPE CHAIR in wooden base featured in KARAKORUM bouclé fabric from Dedar.  
OPPOSITE: NOVEL CHAIR in SELECTED versions next to KNOCKOUT DINING TABLE in light CARRARA. Flavoured with PARIS NIGHTS lighting.



## SAW COLLECTION

# SAW

**THE SAW COLLECTION PAYS HOMAGE TO THE USE OF NATURAL MATERIALS IN NORDIC CRAFT. THE IDEA BEHIND SAW WAS TO SIMPLIFY AND EASE DESIGNS THAT USE SOLID TOP PIECES MADE FROM HEAVY MATERIALS LIKE WOOD OR MARBLE. SAW EFFECTS A LIGHT DESIGN THAT ENHANCE THE SHAPES OF THE TOP MATERIAL AND APPEAR TO FLOAT ON THEIR MINIMAL SUPPORTS.**

A thin V-frame construction, which is based on a refined console design, achieves strength and stability while keeping a light, clean expression. This sturdy frame construction allows for longer table tops without using reinforcements.

The table top is made from two pieces of solid wood giving it a raw look. Sourced from FSC-certified forests, boards are finely detailed for the SAW table and show off a particularly beautiful grain. In the finished product they provide a silky, warm feel. Friends & Founders' surface treatments maintain the natural beauty and feel of the raw material while ensuring its durability.

The SAW collection features DINING and DESK tables in a variety of finishes and materials.

The pieces in this contemporary collection suit several interior contexts and can play central roles in both home and work environments.

SAW have been tested and meet the highest European standards for strength, durability and stability. SAW's versatility means the tables can adorn residential spaces as well as public areas with high demands on use. SAW offers a good example of how clever design adds value to a product without compromising on ambitious design or detailing.

**THE COLLECTION FEATURES DINING AND WORK TABLES IN BOTH STANDARD AND CUSTOM SIZES**

CHARACTERIZED BY A FLOATING DESIGN,  
A NEW COLLECTION OF USEFUL AND GRACEFUL TABLES  
CAME TO LIFE  
FROM AN INTERPRETATION OF THE  
TRADITIONAL CRAFT OF WOOD.



THE COLLECTION FEATURES DINING AND WORK TABLES IN BOTH STANDARD AND CUSTOM SIZES  
SAW TABLE in BLACK solid ash. Two part table top and BLACK metal frame. LA PIPE CHAIRS in striped  
VELVET from NOBILIS. PARIS NIGHTS lighting.



# SAW ROUNDED

CHARACTERIZED BY A FLOATING DESIGN, A NEW COLLECTION OF USEFUL AND GRACEFUL TABLES CAME TO LIFE FROM AN INTERPRETATION OF THE TRADITIONAL CRAFT OF WOOD. THE IDEA WAS TO SIMPLIFY AND EASE DESIGNS THAT USE SOLID TOP PIECES MADE FROM HEAVY MATERIALS LIKE WOOD OR MARBLE. SAW EFFECTS A LIGHT DESIGN THAT ENHANCE THE SHAPES OF THE TOP MATERIAL AND APPEAR TO FLOAT ON THEIR MINIMAL SUPPORTS.

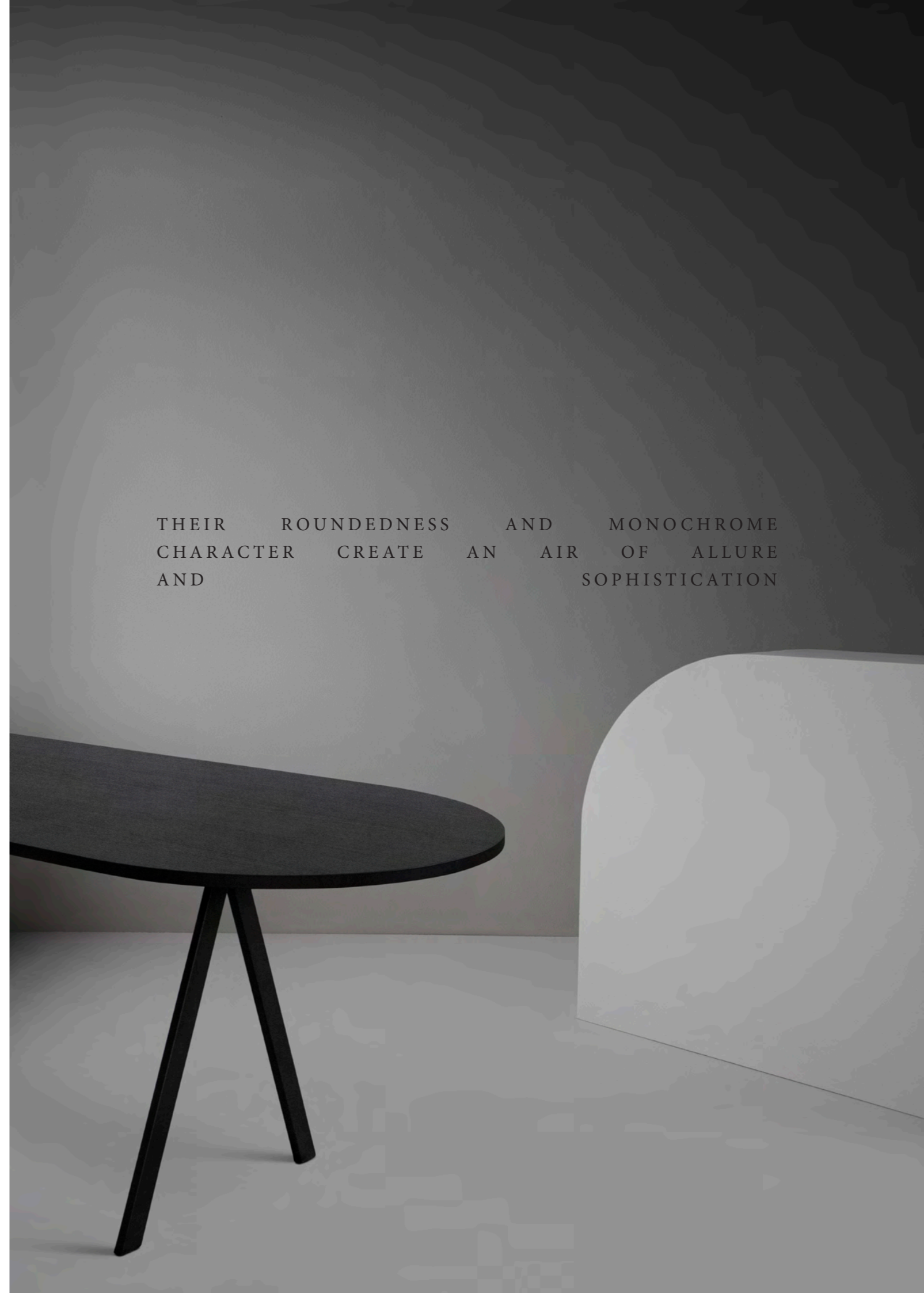
A thin V-frame construction, which is based on a refined console design, achieves strength and stability while keeping a light, clean expression. This sturdy frame construction allows for longer table tops without using reinforcements.

The rounded table top is made from wood and veneer, and its monochrome character adds to its sophistication. Sourced from FSC-certified forests, boards are finely detailed for the SAW table and show off a particularly beautiful grain. In the finished product they provide a silky, warm feel. Friends & Founders' surface treatments maintain the natural beauty and feel of the raw material while ensuring its durability.

The SAW collection features DINING and DESK tables in a variety of finishes and materials. The pieces in this contemporary collection suit several interior contexts and can play central roles in both home and work environments.

SAW have been tested and meet the highest European standards for strength, durability and stability. SAW's versatility means the tables can adorn residential spaces as well as public areas with high demands on use. SAW offers a good example of how clever design adds value to a product without compromising on ambitious design or detailing.

THEIR ROUNDEDNESS AND MONOCHROME  
CHARACTER CREATE AN AIR OF ALLURE  
AND SOPHISTICATION



SAW TABLE in BLACK ash. ROUNDED table top and BLACK metal frame. LA PIPE CHAIRS in Karakorum bouclé fabric from Dedar. PARIS NIGHTS lighting collection. ARC large in grey shaded mirror glass.





SAW TABLE in BLACK ash. ROUNDED table top and BLACK metal frame. LA PIPE CHAIRS in Karakorum bouclé fabric from Dedar. PARIS NIGHTS lighting collection. ARC large in grey shaded mirror glass. OPPOSITE: SAW ROUNDED BLACK accompanied by LA PIPE CHAIRS in striped VELVET from NOBILIS.



# SAW MARBLE

THE SAW COLLECTION PAYS HOMAGE TO THE USE OF NATURAL MATERIALS IN NORDIC CRAFT. THE IDEA BEHIND SAW WAS TO SIMPLIFY AND EASE DESIGNS THAT USE SOLID TOP PIECES MADE FROM HEAVY MATERIALS LIKE WOOD OR MARBLE. SAW EFFECTS A LIGHT DESIGN THAT ENHANCE THE SHAPES OF THE TOP MATERIAL AND APPEAR TO FLOAT ON THEIR MINIMAL SUPPORTS.

A thin V-frame construction, which is based on a refined console design, achieves strength and stability while keeping a light, clean expression. This sturdy frame construction allows for longer table tops without using reinforcements.

The table top is made from a solid marble piece, which is rounded to effect sophistication and allure. The top is honed to a satin finish. Because our marble is untreated and honed it leaves an exquisitely silky feel.

Friends & Founders' marble selection are sourced from Europe where the tradition of marble craft is strong. At the time of manufacture each slab is carefully selected. Each marble in the selection has its own characteristic, some with complex streaking and others with more homogenous patterns.

Friends & Founders' marble pieces have a silky, matte finish which helps enhance the underlying patterns of the raw stone. Because the raw material comes from nature, inconsistencies in markings are typical and often desirable because of their uniqueness.

While all marble can gradually wear or become discoloured, with proper treatment and maintenance marble looks stunning for years and grows an even, warm patina.

THE COLLECTION FEATURES TABLES AND DESKS IN BOTH STANDARD AND CUSTOM SIZES

SAW  
WHILE  
WITH

ACHIEVES  
KEEPING  
EMPHASIS

STRENGTH  
A  
ON

AND  
LIGHT,  
THE

CLEAN  
RAW

STABILITY  
EXPRESSION  
MATERIAL







SAW DESK TABLE in BLACK marble top and BLACK metal frame. LA PIPE CHAIR in brass finish and BLACK VELVET ADAMO & EVE upholstery from Dedar. LIGHTS OUT candle holder in solid marble. OPPOSITE: SAW MARBLE BLACK accompanied by LA PIPE CHAIRS in striped VELVET from NOBILIS. Pendant lighting LA LAMPE with porcelain bulb from TALA. MIRÓ MIRÓ wall mirror in grey mist with a small black table.





SAW MARBLE WHITE accompanied by LA PIPE CHAIR in grey ROYAL NUBUCK aniline from Sørensen Leather. BOXER DESK LAMP in green Swedish marble and opal glass shade. OPPOSITE: SAW DESK TABLE in BLACK MARBLE and black metal frame. LA PIPE CHAIR featured in black base finish and Karakorum upholstery from Dedar. MIRÓ MIRÓ wall mirror in grey mist with a small black table. PARIS NIGHTS desk lamp. MARBLEOUS tray in white honed marble.

## POND COLLECTION

# POND

THE POND COLLECTION FEATURES A RANGE OF GLASS TABLES ROOTED IN GEOMETRIC ABSTRACTION AND THE DESIGNER'S MINIMALIST IDEAL. POND TAKES INSPIRATION FROM MODERNIST ARCHITECTURE AND THE MINIMALIST MANTRA "LESS IS MORE."

POND is characterized by simplicity and constructed as an architectural balancing act. The silhouettes of simple geometric shapes evoke graphic effects where translucent, shaded layers add depth to the visage.

The POND collection was named thinking of reflections in the surface of a pond and the lives reflected in the furniture's glossy glass. The feature gives the pieces interesting angles and contemporary cuts.

POND is manufactured in Northern Europe by skilled craftsmen with a passion for furniture-making and detailing. Joints are tightly sealed by hand using UV-resistant glue — a time-consuming process that requires experience and finesse.

Tables are available in three translucent colours — CLEAR, GREY SMOKE, and BRONZE. The intensity of the colours appears to change because of the layering which imparts a sense of the modern and the material.

The collection suits many spaces and fits well in both public and residential contexts. The pieces are appropriate for a range of building architectures whether historic, mid-century or contemporary. POND was created to be displayed either as a stand-alone or in a set.

THE COLLECTION IS INSPIRED  
BY LAYERED REFLECTIONS  
IN THE SURFACE OF A POND





POND TABLES placed as a set in two different sizes. Featured in translucent grey and bronze colours.

# SHELVISH

THE SHELVISH STORAGE SYSTEM AROSE FROM EXPLORING HOW TO SIMPLIFY DESIGN WITH INSPIRATION FROM A BASIC SHAPE – A STICK. CLEAN-CUT DESIGN, ELEGANT DETAILING, FLEXIBILITY AND OPENNESS MAKE SHELVISH THE PERFECT DISPLAY FURNITURE FOR MODERN INTERIORS.

SHELVISH collection is manufactured in Scandinavia. The woodwork shows off beautiful detailing and uses only raw material from FSC certified forests. The shelves are designed to be strong and sturdy without diagonal reinforcements in order to create a clean expression and open structure.

This contemporary collection fits into several environments and stand out from the surroundings by acting as the perfect frame or pedestal for the treasures and curios of your life.

The brass fittings and elegant design features of SHELVISH underscore quality and craftsmanship.

Friends & Founders' ASH wood shows off an elegant texture and particularly beautiful grain. In the finished product it offers a silky, warm feel. Friends & Founders' surface treatments maintain the natural beauty and feel of the raw material while ensuring its durability.

The collection is available in different colours and sizes. All modules can be connected in order to build a custom system. SHELVISH systems are versatile pieces that complement numerous interior designs both contract and residential.

“SHELVISH ACT AS THE PERFECT FRAME FOR  
YOUR ARTEFACTS AND TREASURES OF LIFE”





THE PERFECT DISPLAY FURNITURE FOR MODERN INTERIORS.  
SHELVISH in SMOKED ASH. Available in different colours and sizes. All modules can  
be connected in order to build a custom system. Ceramics from Japan - ARITA 2016.



# PARIS NIGHTS

THE PARIS NIGHTS COLLECTION IS A NEW SERIES OF EXCLUSIVE LED LUMINAIRES FROM FRIENDS & FOUNDERS. THE DESIGN IS CHARACTERIZED BY GRAPHIC SIMPLICITY. EXCESSIVE DETAILS WERE PARED DOWN TO SIMPLER ELEMENTS THAT CREATE FUNCTIONAL LIGHTING WITH PURE CLASSIC FEATURES.

PARIS NIGHTS is an abstraction of a luminaire with a traditional lamp shade. This "hat" aims to reflect the beautiful adjustable light that shines from the mouth-blown opal glass.

The lampshade is designed to direct light downwards, creating intimacy in the room as opposed to the BOX-ER lamp which is intended to create a flow of light throughout the room.

The finishes and technical features of PARIS NIGHTS underscore quality and craftsmanship.

A sophisticated, durable NIGHT BLACK satin finish perfectly complements the white glossy glass shade. The lamp's built-in, adjustable dimmer helps create a perfect atmosphere in your space.

The minimalist collection was designed to last. And with its graphic, clean-cut design the PARIS NIGHTS collection adds value in numerous interiors both contract and residential.

THE COLLECTION FEATURES PENDANTS, DESK LAMPS, AND FLOOR LAMPS

INSPIRED BY THE VIBRANT STREETS OF PARIS  
AND THE SHIMMER OF STREETLAMPS  
ON THE FASHIONABLE, HAT-WEARING CROWDS





PARIS NIGHTS LIGHTING COLLECTION FEATURES PENDANTS, DESK LAMPS, AND FLOOR LAMPS  
THE PENDANTS are available in two sizes and can be placed solo or in clusters.





PARIS NIGHTS DESK and FLOOR featured in a NIGHT BLACK satin finish with mouth blown opal glass and black fabric cords.



LA LAMPE COLLECTION

# LA LAMPE

THE LA LAMPE COLLECTION IS CHARACTERIZED BY MINIMALIST SIMPLICITY, AND ITS DESIGN WAS CONCEIVED AS AN ARCHITECTURAL BALANCING ACT. THE THIN SILHOUETTES OF ITS GEOMETRIC SHAPES CREATE A STYLISTIC GRAPHIC EXPERIENCE WHEN VIEWED FROM DIFFERENT PERSPECTIVES. THIS SIGNATURE FEATURE HELPS LA LAMPE INSPIRE AN ATMOSPHERE OF ENLIGHTENMENT.

LIGHT is essential for creation, work and for living. LA LAMPE takes inspiration from a source of light that can be said to represent authenticity – naked daylight.

LA LAMPE's design is characterized by graphic simplicity. Its elements create functional lighting with pure classic features.

LA LAMPE is an abstraction of a luminaire with a traditional lampshade that aims to reflect light from the naked glass bulbs. The lampshade directs the light downwards and creates intimacy in the room.

The durable NIGHT BLACK satin finish perfectly complements the large lightbulbs whose naked sphere casts an even, pleasant flow of light over the surroundings giving them an air of sophistication.

The lavish details provide an exclusive luminaire that helps to create a perfect atmosphere in most environments. This functional LED lighting collection is suitable for both contract and residential interiors.

THE COLLECTION FEATURES PENDANTS, WALL LAMPS, AND FLOOR LAMPS

LA LAMPE TAKES INSPIRATION FROM A SOURCE  
OF LIGHT THAT REPRESENT AUTHENTICITY  
NAKED DAYLIGHT



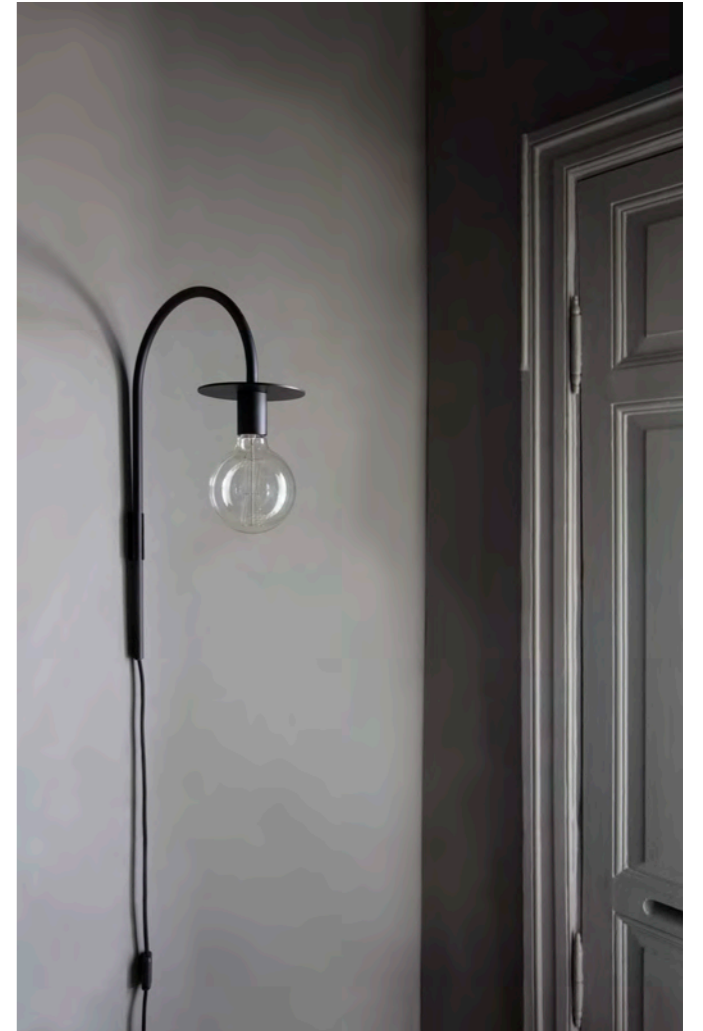


LA LAMPE COLLECTION FEATURES PENDANTS, WALL LAMPS, AND FLOOR LAMPS.  
 LA LAMPE WALL featured with BRASS shade and a vintage mega light bulb.  
 OPPOSITE: LA LAMPE PENDANT in custom colour.





LA LAMPE FLOOR in white marble and LED porcelain light bulb from TALA.  
POND TABLE in bronze shaded glass. LA PIPE LOUNGE in REED fabric from  
SAHCO.



# BOXER

**"BOXER IS INSPIRED BY THE SPEED BAGS THAT BOXERS USE, WHICH BOUNCE BACK AND FORTH AND ARE RE-BALANCED BY THEIR WEIGHT, WHICH NEVER FALL BUT ALWAYS SPRING BACK AGAIN AND AGAIN..."**

BOXER COLLECTION is a new series of exclusive LED luminaires from Friends & Founders.

The design of Boxer takes the themes of strength and fragility as a graphic interpretation and geometric abstraction of the classic boxing punch ball, or the speed bag.

The luminaire is balanced by its own weight and the materials provide contrast and opposition. The marble's solid strength and raw finish contrast with the fragility and lightness of the reflected glass.

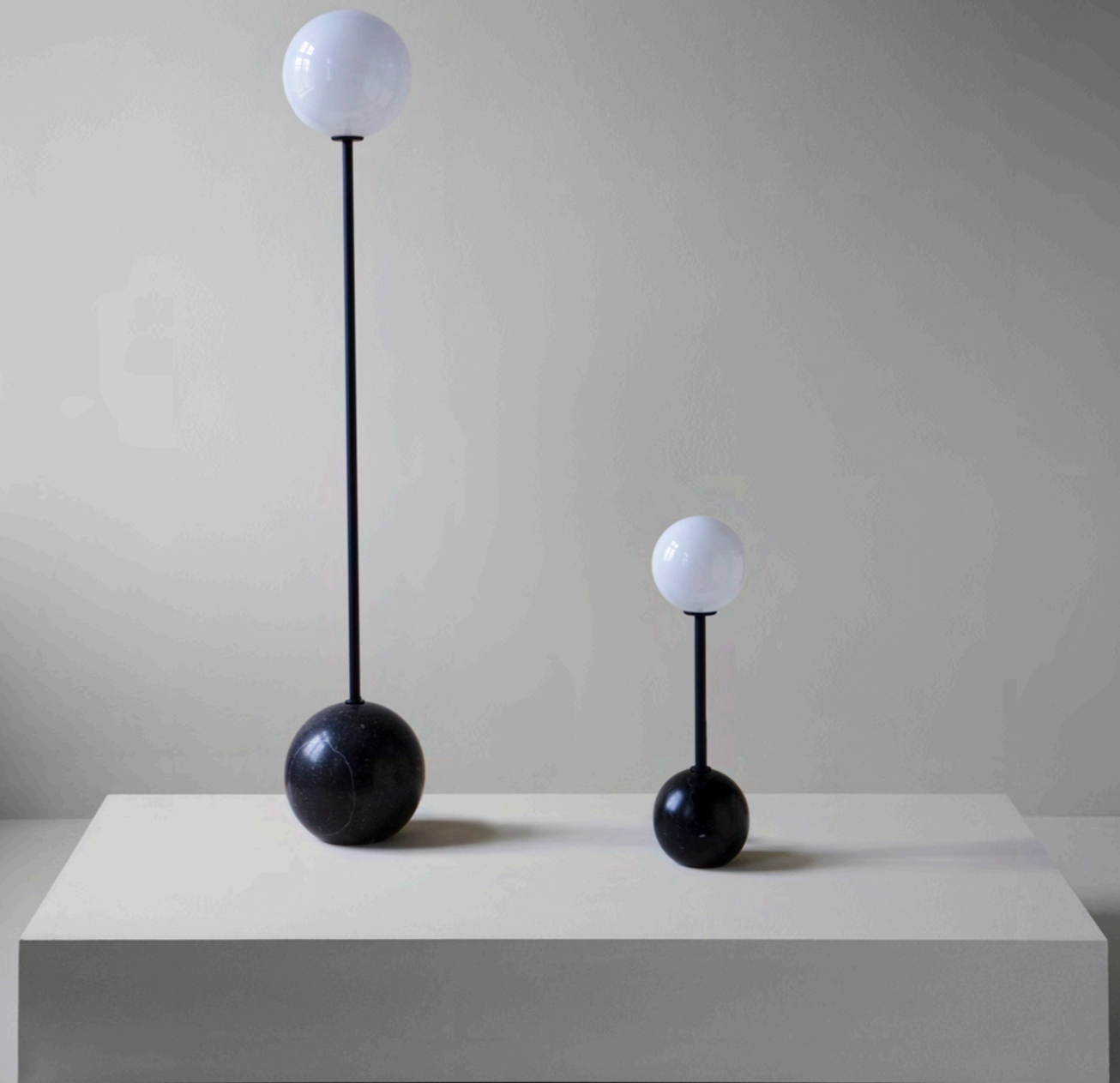
"The materials have contrasting characteristics but together create something new from that opposition," the designer Ida L. Hildebrand explains.

The durable NIGHT BLACK satin finish perfectly complements the white glossy opal glass whose naked sphere casts a pleasant and even flow of light and gives its surroundings an air of sophistication.

The lavish details provide an exclusive luminaire that, with an adjustable dimmer, helps to create a perfect atmosphere in most environments. This functional LED lighting collection is suitable for both contract and residential interiors.

**THE COLLECTION FEATURES DESK LAMPS AND FLOOR LAMPS**

"THE MOUTH BLOWN OPAL GLASS WHOSE NAKED SPHERE CASTS AN EVEN, PLEASANT FLOW OF LIGHT OVER THE SURROUNDINGS GIVING THEM AN AIR OF SOPHISTICATION"





BOXER DESK LAMP in black marble. Also available in a rare green Swedish Kolmård marble. Glass shade in mouth blown opal glass.



THE COLLECTION FEATURES DESK LAMPS AND FLOOR LAMPS  
 BOXER FLOOR LAMP in black next to FF CHAIR in BLACK DAKAR leather.  
 OPPOSITE: BOXER in white marble accompanied by LA PIPE in Karakorum from Dedar.



# CASTLE

THE CASTLE COLLECTION FEATURES A RANGE OF PLANTERS MADE OF SAND-CASTED SOLID ALUMINIUM - MADE TO LAST FOR CENTURIES. CASTLE IS A NEW INTERPRETATION OF THE CLASSIC ANTIQUE VASE, CREATED WITH A SCULPTURAL MINIMALIST SIMPLICITY AND CHARACTERIZED BY TIMELESS AND EXQUISITE DETAILING.

The sophisticated bowl is elevated to emphasize its elegant shape and clean lines. The lavish design details provide an exclusive planter that contributes to the creation of a perfect atmosphere in both residential and landscaping environments.

CASTLE is made from 100% recycled aluminium. The material is extremely durable, lightweight and maintenance-free. A large amount of sand is used in the casting process which is re-used in production. Aluminium demonstrates ideal properties for planting partly because it transfers heat so well, which creates a good environment for the plants.

The CASTLE collection is available in different sizes for indoor and outdoor use and with an optional drainage feature.

Planters are available in RAW aluminium or powder-coated with an extra durable and UV-resistant treatment that makes it suitable for sunny environments.

The blasted-texture finish ages gracefully. Marks such as small cavities or collections of sand from the mould are typical and considered typical for this traditional process which gives the surfaces a distinct and unique character.

"UNIQUELY CASTED BY HAND - ONE MOULD FOR EACH ITEM PRODUCED, CAREFULLY CRAFTED INTO TIMELESS ELEGANCE ACCORDING TO TRADITIONAL METHODS."





CASTLE - A NEW INTERPRETATION OF THE CLASSIC ANTIQUE VASE  
The CASTLE collection featured in three different sizes. In RAW aluminium and in BLACK.



# MIRÓ MIRÓ

**THE MIRÓ MIRÓ COLLECTION OFFERS ELEGANT MIRRORS WITH A SMALL TABLE FOR YOUR FAVOURITE ARTEFACTS – A CANDLE, FLOWER, OR SCULPTURE.. AND WHAT YOU DISPLAY IS REFLECTED IN THE MIRROR GLASS.**

The minimalist collection is a tribute to the artist Joan Miró, and is characterized by stylistic, architectural simplification. The mirror and integrated table are designed with a graphic simplicity. The functional and the aesthetic are united in a minimalistic and contemporary expression. The table hovers on an axis around the centre of attention much like Miró's geometric mobile installations.

To distinguish its appearance the mirror glass is available in a clear glass version or shaded with a warm bronze or a sophisticated grey-smoke tint.

The mirror's visible edges reinforce the purity of the design and intensify an impression of the materiality of the glass. The mirror is slightly spaced from the wall creating an elegant shadow in between.

Mirrors are available in a variety of sizes and different shapes. The oval versions have been designed so they may be mounted both horizontally and vertically. The detachable table is available in a standard black or in brass for the clear-glass mirror versions.

MIRÓ MIRÓ fills many roles in a number of applications both for home or contractual interiors.

The mirrors frequently adorn bathrooms, bedrooms, and hallways. But they suit any space where you can imagine spicing things up with a little extra reflection.

THE MINIMALIST MIRROR COLLECTION  
IS A TRIBUTE TO ARTIST JOAN MIRÓ,  
AND IS CHARACTERIZED BY STYLISTIC,  
ARCHITECTURAL SIMPLIFICATION.



MIRÓ MIRÓ OVAL and ROUND mirrors, featured in standard glass and in bronze / grey tinted shades. Small table in BLACK or BRASS.



# A R C

THE ARC COLLECTION OF MINIMALIST WALL MIRRORS IS A TRIBUTE TO ARCHITECTURE CHARACTERIZED BY GEOMETRIC SIMPLIFICATION AND GRACE. THE ELEGANTLY SHAPED PIECES ARE INSPIRED BY THE ICONIC ARCHWAYS FROM CLASSICAL ARCHITECTURE.

To distinguish its appearance the mirror glass is available in a classic clear glass version or shaded with a sophisticated grey-smoke tint.

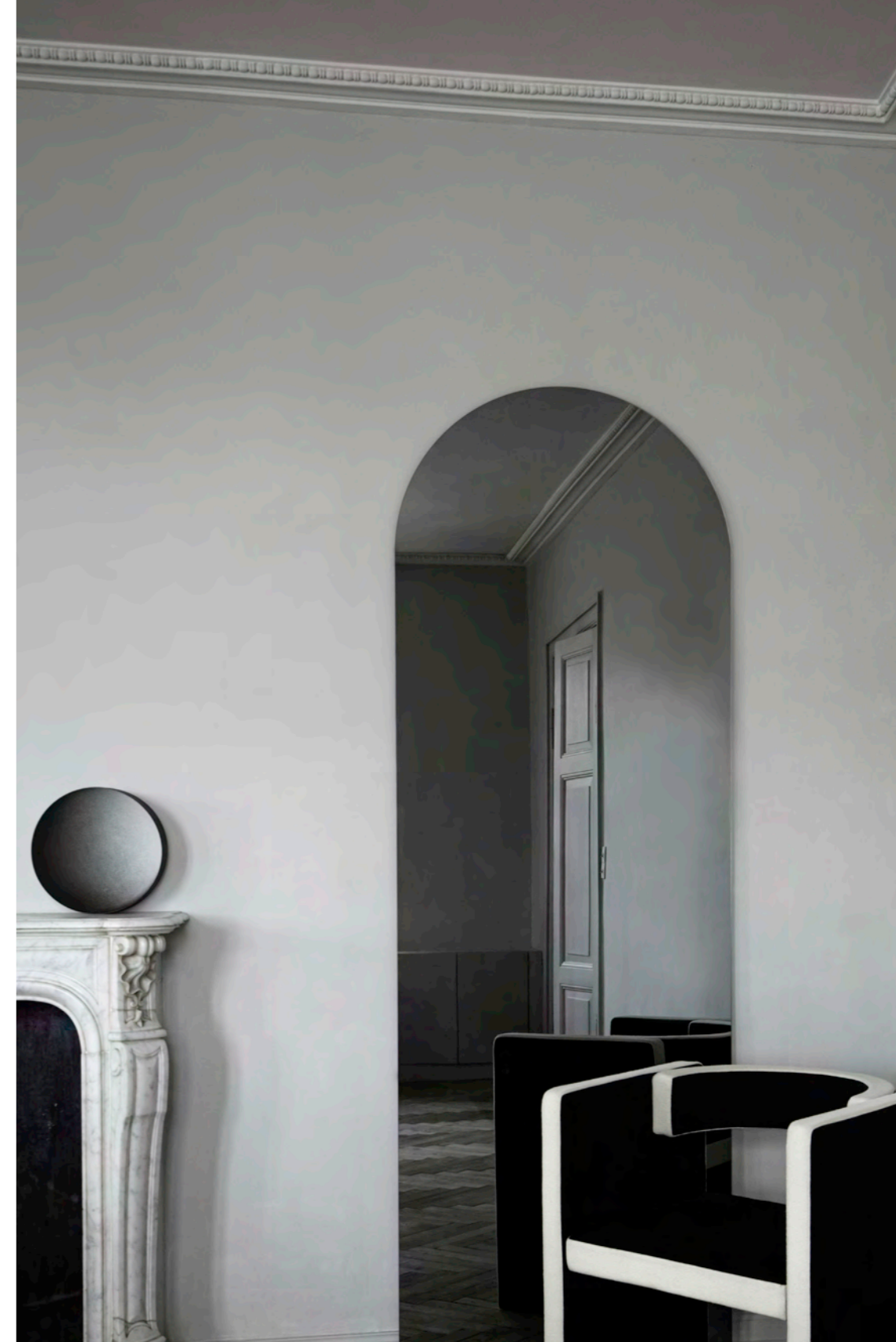
The mirror's visible edges reinforce the purity of the design and intensify an impression of the materiality of the glass. The mirror is slightly spaced from the wall creating an elegant shadow in between.

Mirrors are available in two sizes. A small version suits most homes and interior spaces. The large version requires a more generous space.

ARC is suitable for most interior contexts. The pieces are appropriate for a range of building architectures whether historic, mid-century or contemporary.

The mirrors may adorn bathrooms, bedrooms, hallways, or any space that you can imagine spicing up with a little extra reflection. ARC can be displayed either as a stand-alone or in a set.

ARC AND THE MINIMALIST  
DISPLAYS THE FUNCTIONAL AND  
EMPHASIZES MEETS THE AESTHETIC  
GRAPHIC THE CONTEMPORARY  
SIMPLICITY ESSENTIALS. IN A  
EXPRESSION.



ARC MIRROR large featured in a sophisticated grey-smoke tint. NOVEL CHAIR in the SELECTED two coloured version, fabric VIDAR from KVADRAT. OPPOSITE: ARC LARGE next to KNOCKOUT HIGH TABLE in black marble and solid black coated aluminium. Indoor and outdoor use.



ARC MIRROR small featured in grey mist. NOVEL CHAIR in the SELECTED two coloured version, fabric VIDAR from KVADRAT. OPPOSITE: ARC small next to NOVEL CHAIR in a light bouclé - Karakorum from Italian Dedar.



# STAND OUT

**STAND OUT IS AN OPEN WARDROBE FOR MODERN INTERIORS, DESIGNED WITH A GRAPHIC SIMPLICITY WHERE THE FUNCTIONAL AND THE AESTHETIC ARE UNITED. FROM ANY ANGLE THE CONTEMPORARY PIECE SHOWS OFF EXTRAVAGANT, CRAFTED DETAILING WHICH EMPHASIZES THE CAREFUL EYE OF THE DESIGNER.**

The STAND OUT coatrack complements the existing collection of TANGENT hangers and continues in the style of design that has characterized Friends & Founders' work. Its materials have been selected to harmonize with the existing portfolio which is founded in geometric abstraction and associated with the simplicity of minimalism.

STAND OUT is an open wardrobe for modern interiors, designed with a graphic simplicity where the functional and the aesthetic are united.

"I have a passion for objects that can be functional and sculptural at the same time," designer Ida L. Hildebrand explains.

The coatrack is a freestanding piece where the thin lines of its metal construction balance on a solid marble base.

This functional and eye-catching collection is suitable for both contract and residential interiors. With its lavish details STAND OUT helps create a perfect atmosphere in most environments.



I HAVE A PASSION FOR OBJECTS  
THAT CAN BE FUNCTIONAL AND  
SCULPTURAL AT THE SAME TIME

- designer Ida L. Hildebrand



STAND OUT coat hanger, free standing. LA PIPE CHAIR in A JOY fabric from Italian Dedar.  
OPPOSITE: STAND OUT accompanied by KNOCKOUT LOUNGE TABLE in black marble.

# DESIGNER PORTRAIT

IDA LINEA HILDEBRAND

Creative Director and Co-founder of Friends Founders

Architect and designer Ida Linea Hildebrand was born in Stockholm in 1978. The daughter of a cabinet maker, she continued the family tradition by choosing a path that led her to furniture design.

In 2008 Ida Linea graduated from the distinguished Stockholm art academy Konstfack (the University of Arts, Crafts, and Design). She earned a Master's Degree in Fine Arts within the field of Interior Architecture and Furniture Design.

After studying, Ida Linea moved to Copenhagen – a mecca for contemporary furniture design – and there her dream of becoming an independent designer took shape. She met future husband and co-founder of Friends & Founders, Rasmus Hildebrand, and the couple established a studio in 2013. At that creative space in the north of Copenhagen the universe of Friends & Founders' design took shape.

Ida Linea took the role as the creative force and curator of the Friends & Founders portfolio. Her work takes inspiration from expressive architectural and spatial structures.

A sculptural approach to furniture design, clean aesthetic

profiles, and attention to detail have flavored her designs to date. She often begins with ideas from the artistic paradigm of geometric abstraction. Designs have roots in modernism and the Bauhaus movement's functionalist ideologies, often associated with minimalism.

HER WORK HAS DISTINCT  
EXPRESSIVE INFLUENCES  
FROM THE 20TH CENTURY  
AVANT-GARDE.

Friends & Founders' contemporary collection shows off extravagant, crafted detailing which attests to the designer's careful eye. To guide her work Ida Linea draws on technical expertise and her personal philosophies of life. That mix produces results with distinct character and confidence.

Her award-winning work with Friends & Founders has quickly gained international recognition, a result of the designer's ability to focus her passion and creativity on the objects of our everyday.



Do you have any early memories of design or architecture?

I designed my first piece of furniture when I was three! It was a wooden bed. I drew the design, and my father cut and assembled it. There was an arched, cobalt blue sculpted headboard, and it had hearts, stars, and moons on the sides. I remember running my hand along them before falling asleep. It maybe wasn't this year's best seller, but you might call it a classic. It's still in the family!

The environment I grew up in was creative. So art and architecture entered my life naturally. My father was a carpenter and knew about furniture. Both my parents were practical and made things with their hands. And they encouraged me to create. So the seeds were there to become a designer.

When and how did you start a studio?

I can't say the journey to becoming a designer was straightforward or certain. In fact there was a period in my life where I was unsure about my direction. I had had this creative upbringing. But then I chose a rather technical field of study, which might be seen as a violent rejection of my pure artistic roots!

Before entering the world of design I had to quench my thirst for adventure so I took a pilot certificate as 16- year-old and flew my own plane. It made me see things in a new perspective you could say. But actually in hindsight that training has given me a deeper understanding of the negotiations between the worlds of design

and manufacturing. And in the end I followed my gut and went back to a more creative realm of study at [the Stockholm art institute] Konstfack. I took a Master's degree in 2008 in Fine Arts in the program Interior Architecture and Furniture Design. At first I took jobs working with interior design, but I had an epiphany after moving to Copenhagen. I realized I felt most passionate about design on a smaller scale. And I quickly decided I wanted to design furniture. That was my calling. And I was lucky to find Rasmus, someone who could make it possible. We had a common vision, and we had the courage to give it a shot. So we opened a studio in 2013 just north of Copenhagen. And that's the year we started Friends & Founders.

What most makes your designs stand out?

We start with a new idea, and we try to bring it to life, protecting the original inspiration through all the corrupting pressures of design and manufacturing. We want the results to be original and inspiring. Besides that, we design products for the future which means both that they have a timeless quality and that they are more sustainable. Those imperatives affect how we choose our materials and manufacturing processes. And the choices aren't the easiest ones to make. The end-product is a bit more expensive to make compared with one that's mass produced.

High-level detailing, carefully-selected raw materials, durable finishes, and fine-tuned dimensioning – all are ingredients for long-lasting design. We focus sharply on details: designs with fewer joints, proportional balance, innovative processes for

construction and manufacturing. The end-consumer might never take note of this fine-tuning, but they'll feel it in the total impression of the furniture. We see this detail-focus as essential to good design. And it's design to last decades. Or centuries! Who knows?

An important reason we can make that meticulousness possible is our autonomy. We design things from scratch and we see the process through to the end – production and execution. Most designers don't get to do that. They have to give their designs up for adoption. I highly value the fact that I have control from start to finish. It means there are no compromises. That's something you want if you dream of making pieces that last – ones that have the timelessness of classics like from Jacobsen, Alto, or Wegner.

Can you describe any values that most inform your work?

I try to be true to my instincts, to trust my gut feelings, and to never compromise. If I do those things then I find I'm beating my own new path, not following ones made by others. As a designer I aim to draw new things, not reinvent old ones.

People often ask me about my influences. Of course there are the "masters" – historical figures from architecture, art, and design that I feel a strong connection to. But I always remind myself there are tons of new modern "masters" out there, experts and devotees who approach their work with great passion. They might be creators or might be something else. But they refuse to take shortcuts. We take great inspiration from those people.

What's it like to work with furniture in Denmark?

I appreciate the free spirit, open-mindedness, creativity, and – especially – the emphasis on quality. Even on a personal level, Denmark is a place where you can be yourself, be an individual. Besides those things, Danes prioritize finding a good life balance. You work hard, but you also prioritize fun, family, and friends. That's important for us because with a relatively new company we have a tendency to work constantly. And on top of starting a company we started a family with two sets of twins (four kids!) and bought a 340-year-old home in need of 340 renovation projects. So "balance" is key for us.

Is the Scandinavian tradition good or bad for new designers?

It's both. Saying you're a designer from Scandinavia tells people something right away. Danes, for example, are proud of their design heritage, and they maybe have certain expectations because of it. There's also a market pressure because Danes buy the classics. So as a new designer you can either join in the tradition and surf on the success of the masters or you can try to beat your own path. But then it's difficult to get recognition for your work. On the other hand, if you think of recognition outside of Denmark, simply saying "Danish" design means you'll get some positive attention. So it can be a blessing or curse depending on how you look at it.

WE START WITH A NEW IDEA, AND WE TRY TO BRING IT TO LIFE, PROTECTING THE ORIGINAL INSPIRATION THROUGH ALL THE CORRUPTING PRESSURES OF DESIGN AND MANUFACTURING. WE WANT THE RESULTS TO BE ORIGINAL AND INSPIRING. BESIDES THAT, WE DESIGN PRODUCTS FOR THE FUTURE.

I HIGHLY VALUE THE FACT THAT I HAVE CONTROL FROM START TO FINISH. IT MEANS THERE ARE NO COMPROMISES. THAT'S SOMETHING YOU WANT IF YOU DREAM OF MAKING PIECES THAT LAST – ONES THAT HAVE THE TIMELESSNESS OF CLASSICS LIKE FROM JACOBSEN, ALTO, OR WEGNER.

## DESIGNERS' NOTES

How do you think about sustainability?

We want to think about sustainability from the start, to make it a key to our design, not an afterthought. The most impactful way for designers to think about sustainability is to make products that will last – not to support a culture in which cheap products quickly go out of fashion or break and become unusable. Nowadays one can produce almost anything, technically. So I think all manufacturers should shoulder this burden to create products that last for the sake of sustainability. It's much harder for consumers to make sustainable decisions when it comes to furniture or building materials. They make the purchase decision once in a while, and if there are cheaper alternatives available then sustainability might never enter the equation. Governments can help here by creating regulation for furniture and building material.

Has the Covid-19 pandemic had any affect on your work?

Like it has for many people the quarantine has shown us some good sides. We generally feel a bit less stressed for one. And we've had time to reflect on our lives and priorities. And I'd say the pandemic has been pretty good for creativity! But it's also meant that we haven't been able to share our work. We can't travel or display at tradeshow or exhibitions. However, crises come and go, and I wouldn't be surprised if there's a sort of tidal change afterwards. It will be interesting to see if people's new lifestyles will mean permanent change and how that will affect our business and creative work. But I suspect whatever the case that our philosophies and core values will put us in a good position.

## INTERVIEW

WORDS VINCENT CAVALIER

I create designs founded in ARCHITECTURE , ART and CRAFT. For me inspiration is illustrated as an archive of experiences and values.



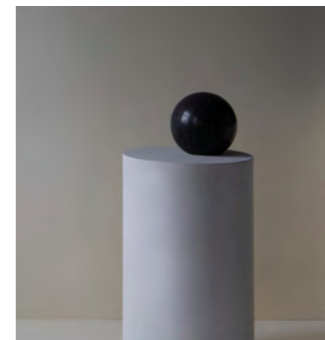
EXISTENCE of GEOMETRY in life

Layers and TRANSPARENCY

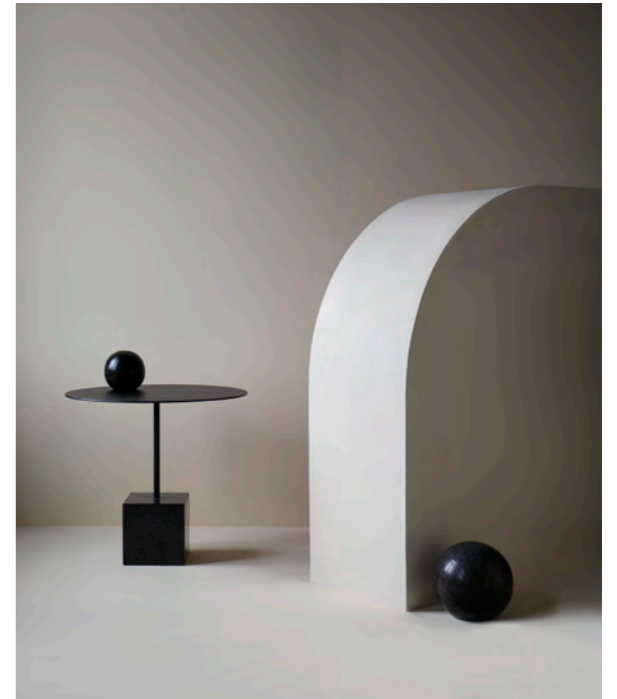


EDGES BOLDNESS SILHOUETTES and LINES

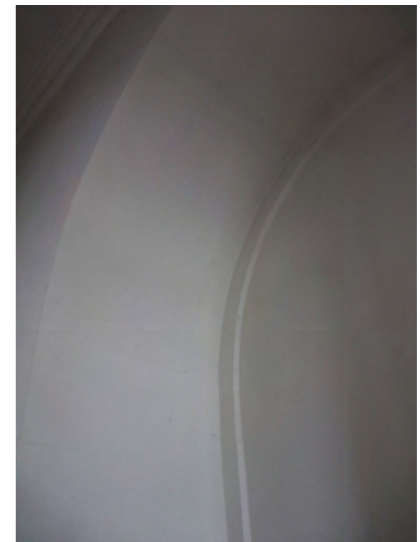
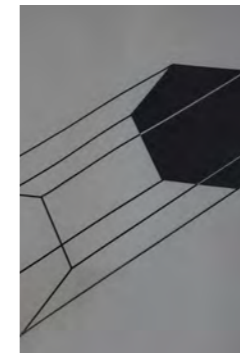
ORGANIC pieces and FRAGMENTS of a whole



A TRIBUTE to architecture and monumental creations.



STRUCTURES and constructions



Fascination for the human scale and respect for humanistic values

TEXTURES

WORDS & PHOTOGRAPHY  
by  
IDA L. HILDEBRAND



SURFACES AFFECT OUR PERCEPTION OF SHAPES.  
THE OUTER LAYER ENHANCE THE STRUCTURAL  
IMPRESSION OF AN OBJECT WHERE ITS CONTOURS  
AND SILHOUETTE CREATE OUR EXPERIENCE OF  
THE ACTUAL SHAPE.





And this impression is vital to our sense of the object's design. Its covering creates an identity. It initiates our perception of the object. Texture, pattern, and color take a new importance considered in this way. And these qualities affect our different senses, not only that of sight. Considered as an element of architecture a piece of furniture is experienced through perceptions of space, scale, sound, and light. The outer appearance of these pieces is aesthetic in that it enhances the immediate experience of the object. But in an interplay with its surroundings it can also create a complex expression of

ART, ELEGANCE,

ICONICITY,

STRENGTH, AND  
CONFIDENCE.



POETRY,

UNIQUENESS,

CONTEMPORANEITY,





# UPHOLSTERY COLLECTION

SELECTED BY

FRIENDS & FOUNDERS

THE UPHOLSTERY CREATE CHARACTER. OUR IMPRESSION OF THE SHAPE CHANGES DEPENDING ON THE FABRIC'S TEXTURE AND PATTERNING, CONTEMPORANEITY OR CLASSICALITY. AND THAT MAKES THE CHOICE CRUCIAL TO THE PIECE' PRESENTATION IN DIFFERENT INTERIOR SETTINGS.

Friends & Founders' SELECTED upholstery collection offers a wide range of fabrics and leathers for contract and residential use. The variety of upholsteries allows for better adaptability as their different qualities determine suitability for specific settings and uses.

Friends & Founders offers a wide selection of lasting standard fabrics from leading manufacturers but also provides more exclusive selected collections for higher - end interior designs.



DESIGN WITH THE FUTURE IN MIND



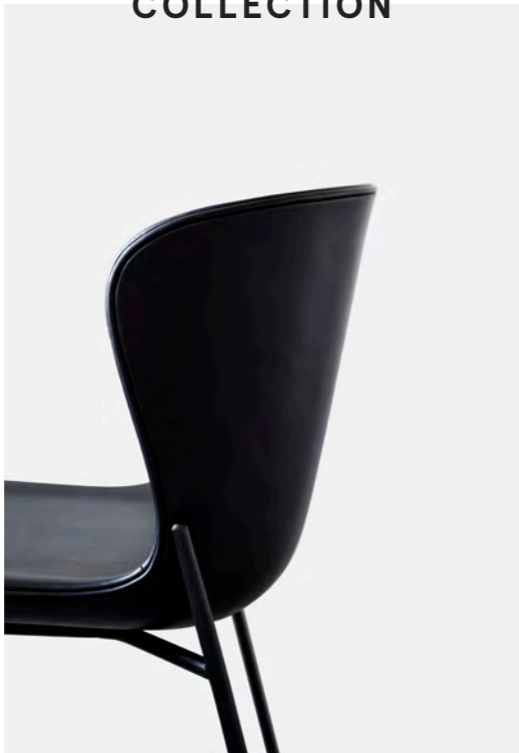
**FRIENDS & FOUNDERS** creates designs with the future in mind. That means we carefully select materials and processes so as to be as conscientious about their impact as possible.

We believe in creating products that last. For us that means our products should be durable and easy to maintain. We believe in a production cycle of use, re-use, and material re-cycle when a product's useful life is over. And we want our customers to have this holistic view when choosing new pieces

- not to see furniture as going out of style with the seasons but as durable, beautiful objects they will live with.

With these thoughts in mind Friends & Founders is now launching a new collection for sustainable upholstery. The majority of this collection bears the EU Ecolabel and offers a range of durable fabrics made of recycled materials or sustainably produced leathers.

LEATHER  
COLLECTION



SELECTED  
by  
FRIENDS & FOUNDERS



THE LEATHER COLLECTION features a range of lasting classic and exclusive leathers from our selected partners SØRENSEN LEATHER and NEVOTEX. The natural leather collection ranges ANILINE LEATHER / SEMI ANILINE LEATHER / PROTECTED LEATHER AND CHROME FREE LEATHER, suitable for Friends & Founders' collections of upholstered furniture.

The selected leathers have a clear environmental ambition where sustainability is the key word. The majority of the collection bears the EU Ecolabel and offers a range of sustainable leathers.

The strong selection is available in intense contemporary colour palettes or in soft tones and genuine earthy shades.

All Friends & Founders' selected European leathers are genuine. Each type of leather has its own characteristics and different quality. The selection feature classic durable and elegant smooth leathers, suitable for contract or residential use. The selected collection also offer exquisite silky soft grain leathers, such as ROYAL NUBUCK AND DUNES, characterized with a subtle texture and a velvety like touch. Suitable for high - end interiors.

LEATHER COLLECTION



ROYAL NUBUCK – SØRENSEN LEATHER

ROYAL NUBUCK is high-end. It's an exquisite leather with a subtle texture and a velvety-like touch. The silky, smooth surface makes it ideal for items you can reach out and touch.

The collection ranges an extensive array of natural colours, which vary depending on the hide. They span a spectrum of rich earthy hues, featuring a subtle gradation of shades from dark to medium to light. All with a discrete natural grain that's unique to each hide.

The luxurious collection ROYAL NUBUCK, with its genuine earthy tones, seduces your senses.

WWW.SORENSENLEATHER.COM

TYPE	ANILINE LEATHER
THICKNESS	1.4 – 1.6 mm
HIDE SIZE	5.0 – 5.5 m2
ORIGIN	European rawhide
SURFACE	Smooth, velvety grain structure
FINISH	Natural with a Scotch-guard protection
TANNAGE	Chrome
ENVIRONMENT	No chrome VI
USE	Residential use
COLOURS	11 COLOURS



ULTRA – SØRENSEN LEATHER

One of the most versatile leathers around, ULTRA is everything you would want in an "everyday" type of leather. Buffed and embossed and truly nice to touch, the surface of ULTRA boasts a uniform grain pattern spanning over the entire hide.

ULTRA has some additional amazing attributes. Thanks to its extremely strong protective finish, it's very user-friendly and easy to maintain. Stains don't even leave a mark once wiped away using a fresh cloth with water. What's more, as a leather with a heavy surface protection, ULTRA will take longer to show signs of aging or fading due to exposure to light.

WWW.SORENSENLEATHER.COM

TYPE	PROTECTED LEATHER
THICKNESS	0.9 – 1.1 mm
HIDE SIZE	4.0 – 5.0 m2
ORIGIN	Non European
SURFACE	Very strong and durable with a uniform, matt surface print
FINISH	Extremely strong surface protection
TANNAGE	Chrome
ENVIRONMENT	No chrome VI
USE	Contract use
COLOURS	30 COLOURS



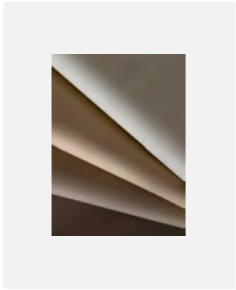
DUNES – SØRENSEN LEATHER

DUNES ANILINE LEATHER characterizes of its natural look, subtleness and sublime tactile feel. A special process involving sanding, buffing and applying a special type of leather oil to the surface gives it that almost velvety touch. At the same time, DUNES boasts a matt look that's raw with a touch of understated elegance.

Part of DUNES' extra appeal are the subtle, natural markings which bring a unique personality to each hide. A delicious patina will appear over time. In fact, the more you use DUNES, the more the leather becomes shinier and smoother.

WWW.SORENSENLEATHER.COM

TYPE	ANILINE LEATHER
Thickness	1.1 – 1.3 mm
Hide Size	4.5 – 5.5 m2
Origin	European rawhide
Surface	Smooth, velvety grain structure
Finish	Special leather oil
Tannage	Chrome-free
Environment	NORDIC SWAN
USE	Medium use
COLOURS	7 COLOURS



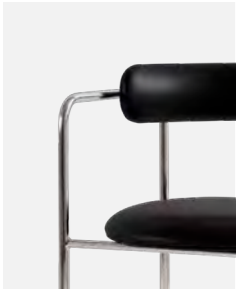
TRIUMPH CRIB 5 – SØRENSEN LEATHER

TRIUMPH collection is exceptionally durable and versatile, characterized by antibacterial properties and aesthetic appeal. Ideal for a wide range of settings, public spaces and industry sectors.

TRIUMPH CRIB5 is as durable as it is beautiful. Fortified by a strong finish that makes the leather smudge and stain resistant, allowing for easy upkeep. It's especially appealing to architects and interior designers for projects where the need for a stunning leather is coupled with a concern for hygiene, as part of the "new norm". From the care sector, institutions, hotels and restaurants to airports, corporate gatherings, private homes and more.

WWW.SORENSENLEATHER.COM

TYPE	PROTECTED LEATHER
Thickness	1.0 – 1.3 mm
Hide Size	5.0 – 6.0 m2
Origin	European rawhide
Surface	Matt, smooth, strong and firm
Finish	Surface protection. Water repellent, dirt repellent, stain resistant, durable
Tannage	Chrome
USE	Contract use
COLOURS	37 COLOURS



SWOON – SØRENSEN LEATHER

Smooth to the touch with a slight sheen to the surface, SWOON is a captivating leather that awakens the senses. Look closer and you can see very subtle natural markings, which are minimised via a special sanding process. Add to that a light, transparent wax and you have a smooth, sensual leather with a lovely feel.

Beautiful browns, a distinctive black, a gorgeous grey and a serene green make up an attractive palette of must-have colours with an unconventional edge.

WWW.SORENSENLEATHER.COM

TYPE	ANILINE LEATHER
Thickness	1.0 – 1.2 mm
Hide Size	4-5 m2
Origin	European rawhide
Surface	Smooth grain
Finish	silky soft touch
Tannage	Wax with a silky feel
USE	Chrome
COLOURS	Medium use
	5 COLOURS



CHALLENGER – NEVOTEX

CHALLENGER is a durable chrome free semi aniline leather with a soft grain and elegant appearance. Manufactured in Italy from European raw hides which appears without natural marks.

This exclusive product has been manufactured with a clear environmental ambition where sustainability is the key word.

Friends & Founders have selected a strong palette of 8 most useful earthy colours.

WWW.NEVOTEX.COM

TYPE	SEMI ANILINE LEATHER
Thickness	1.1 – 1.3 mm
Hide Size	5 m2
Origin	European rawhide
Surface	Smooth, soft grain structure
Finish	Natural
Tannage	Chrome-free
USE	Medium use
COLOURS	8 COLOURS



DUET – SØRENSEN LEATHER

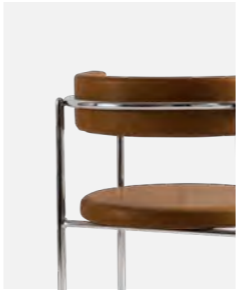
DUET is a truly cutting-edge concept. A double-sided leather with one side in soft nubuck and the other side in rustic suede. An innovative, eco-collection in a colour palette co-created with Tom Dixon.

With both sides to play with, it's your opportunity to experiment with tactility. Create contrast or cohesion – or both. While nubuck is known for its exclusive appeal and velvety-like touch, suede has an understated elegance with slightly more depth. The two surfaces complement each other and correspond well in terms of colour.

WWW.SORENSENLEATHER.COM

NUBUCK SIDE

TYPE	ANILINE LEATHER
Thickness	1.1 – 1.3 mm
Hide Size	4.0 – 4.5 m2
Origin	European rawhide
Surface	Smooth, velvety grain structure
Finish	Natural with a Scotch-guard protection
Tannage	Chrome
USE	Medium use
COLOURS	11 COLOURS



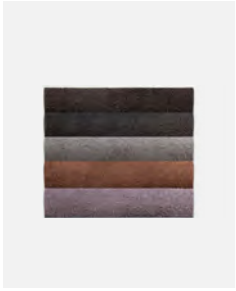
DAKAR – NEVOTEX

DAKAR leather is a classic and elegant smooth Aniline with a silky surface due to the waxed smooth grain. DAKAR looks stunning on design furniture due to its characteristic classic leather look. Besides, it is a durable leather due to the treated strong finish and therefore suitable for contract use as well as residential.

DAKAR is produced in ITALY and the full collection ranges 32 traditional and useful colours. From colourful and intense palettes to soft tones in genuine earthy shades.

WWW.NEVOTEX.COM

TYPE	ANILINE LEATHER
Thickness	1.0 – 1.2 mm
Hide Size	4.0 – 4.5 m2
Origin	European rawhide
Surface	Smooth grain
Finish	silky soft touch
Tannage	Transparent wax
Environment	Chrome
USE	OEKO-TEX 100
COLOURS	Contract use
	32 COLOURS



DUET – SØRENSEN LEATHER

DUET is a truly cutting-edge concept. A double-sided leather with one side in soft nubuck and the other side in rustic suede. An innovative, eco-collection in a colour palette co-created with Tom Dixon.

With both sides to play with, it's your opportunity to experiment with tactility. Create contrast or cohesion – or both. While nubuck is known for its exclusive appeal and velvety-like touch, suede has an understated elegance with slightly more depth. The two surfaces complement each other and correspond well in terms of colour.

WWW.SORENSENLEATHER.COM

SUEDE SIDE

TYPE	ANILINE LEATHER
Thickness	1.1 – 1.3 mm
Hide Size	4.0 – 4.5 m2
Origin	European rawhide
Surface	Smooth, velvety grain structure
Finish	No finish
Tannage	Chrome
USE	Medium use
COLOURS	11 COLOURS

HOME  
COLLECTION



SELECTED  
by  
FRIENDS & FOUNDERS

The RESIDENTIAL collection offers a rich selection of sophisticated classic and contemporary fabrics for medium to hard use, all suitable for Friends & Founders’ collections of upholstered furniture. The collection feature a wide palette of upholstery in the exclusive range. The selection showcase natural fabric compositions with rich Bouclé or velvet textures and exclusive subtle woven fabrics with unique and eye-catching patterns and surfaces. Available colours range from vibrant, bold and intense dark to pure sensual natural shades. Explore the collection of beautiful and desirable fabrics from DEDAR & SAHCO and more.



RESIDENTIAL COLLECTION



KARAKORUM - DEDAR

KARAKORUM is a bouclé wool and viscose fabric, inspired by precious Astrakhan fur. Comfortable and bulky with a soft hand-feel.

Textured and soft to the touch, bouclé fabrics combines strength with a comfortable hand-feel. From the natural fibres of wool, the collection enhances the spontaneity typical of craftsmanship, in which irregularity is a vital element of the fabric's preciousness.

DEDAR KARAKORUM is one of our favourites and featured on Friends & Founders' upholstery collection for FF, LA PIPE and NOVEL series.

WWW.DEDAR.COM

TYPE  
COMPOSITION  
WEIGHT  
WIDTH  
MARTINDALE  
SURFACE  
  
USE  
COLOURS

WOOL BOUCLÉ  
42%WO 33%CV 24%CO 1%PA  
g/ml 1040  
130 cm - 51.18 in  
40.000  
Soft hand-feel,  
bulky rich texture  
Residential use  
8 COLOURS



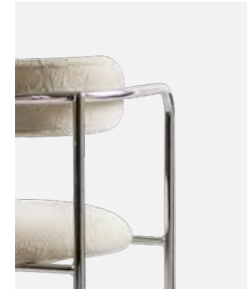
ATHERINI - DEDAR

A densely packed chevron motif creates a hard wearing jacquard fabric. The extremely simple graphic stroke, whose impact lies in repetition, evokes the movement of a shoal of silver sides, the tiny fish that skim the surface of the sea floor.

WWW.DEDAR.COM

TYPE  
COMPOSITION  
WEIGHT  
WIDTH  
MARTINDALE  
SURFACE  
  
USE  
COLOURS

JACQUARD CHEVRON  
59%PES 41%CO  
g/ml 1079  
140 cm - 55.12 in  
40.000  
Dense woven structure  
Chevron design, textured  
Residential & Contract use  
Medium/Hard Use  
2 COLOURS



A JOY - DEDAR

The twill design of diagonal lines create a unique look and add extra character. A Joy combines a rich linen warp with a bouclé wool weft. Textural and irregular, A JOY is a fabric that enhances the tradition and style of 20th century materials. Comfortable with a soft hand-feel.

WWW.DEDAR.COM

TYPE  
COMPOSITION  
WEIGHT  
WIDTH  
MARTINDALE  
SURFACE  
  
USE  
COLOURS

WOOL TWILL  
53%CV 37%WO 8%LI 2%PA  
g/ml 1560  
140 cm - 55.12 in  
40.000  
Soft hand-feel,  
twill design, rich texture  
Residential use  
2 COLOURS



UPUPA - DEDAR

The chevron motif, an archetypal textile weaving technique, is interpreted into a textural language. A graphic stroke of extreme simplicity teams up with the spontaneity and expressive richness of soft textural yarns, to offer a solution for upholstery applications.

WWW.DEDAR.COM

TYPE  
COMPOSITION  
  
WEIGHT  
WIDTH  
MARTINDALE  
SURFACE  
  
USE  
COLOURS

SOFT TEXTURAL CHEVRON  
28%CV 27%PAN 26%WO  
10%PES 5%LI 4%CO  
g/ml 926  
140 cm - 55.12 in  
33.000  
Soft woven structure  
Chevron design, textured  
Residential use  
4 COLOURS



XYLOPHONE - DEDAR

An Australian virgin wool canvas of contemporary inspiration. Resistant and hard-wearing, Xylophone features a rich texture, with a soft hand-feel. Suitable for urban and Scandinavian interiors.

WWW.DEDAR.COM

TYPE  
COMPOSITION  
WEIGHT  
WIDTH  
MARTINDALE  
SURFACE  
  
USE  
COLOURS

WOOL CANVAS  
54%WO 32%CO 13%PAN 1%PA  
g/ml 1008  
135 cm - 53.15 in  
40.000  
Soft hand-feel,  
canvas design, rich texture  
Residential use  
3 COLOURS



NIMBUS - DEDAR

A soft wool bouclé fabric reminiscent of puffy clouds. An uneven surface and textural richness are the distinctive features of this fabric. The delicate colour palette, including natural tones and darker shades, enhances the intrinsic nature of wool.

WWW.DEDAR.COM

TYPE  
COMPOSITION  
WEIGHT  
WIDTH  
MARTINDALE  
SURFACE  
  
USE  
COLOURS

WOOL BOUCLÉ  
70%WO 15%CO 10%PA 5%PES  
g/ml 1040  
140 cm - 55.12 in  
40.000  
Soft hand-feel,  
smooth nap  
bulky rich texture  
Residential use  
8 COLOURS



TIGER MOUNTAIN - DEDAR

TIGER MOUNTAIN is high-end. Inspiration drawn from Tibetan carpets which were discovered in the West during the seventies, was used to complete important artistic and design research. A fascinating design as it is open to subjective "imaginative" interpretation, with magical tigers, curious guardians of many mysteries and a map featuring unknown places. A jacquard velvet boasting strong personality, expressive and highly regarded.

WWW.DEDAR.COM

TYPE  
COMPOSITION  
WEIGHT  
WIDTH  
MARTINDALE  
SURFACE  
  
USE  
COLOURS

RICH VELVET WITH DESIGN  
63%CV 37%CO  
g/ml 720  
138 cm - 54.33 in  
40.000  
Soft hand-feel,  
smooth nap  
lively , slightly crushed  
Residential use  
3 COLOURS



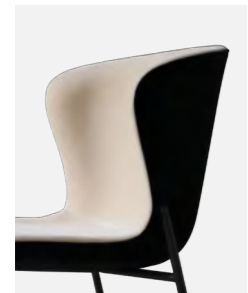
SAFIRE - SAHCO

Safire's coarse surface structure gives a subtle handwoven appearance that is both unique and dynamic, adding a special and unique dimension to this upholstery fabric. The thick bouclé and chenille yarns contribute to its woolly handle and soft appeal but also gives a vibrant two-tone effect. The colour palette includes both quiet natural shades and strong, bold combinations.

WWW.SAHCO.COM

TYPE  
COMPOSITION  
  
WEIGHT  
WIDTH  
MARTINDALE  
SURFACE  
  
USE  
COLOURS

CHENILLE BOUCLÉ  
43% VISCOSE, 17% POLY  
ACRYLIC, 15% NEW WOOL,  
9% COTTON, 8% LINEN,  
8% POLYESTER  
g/lin 1013  
140 cm - 55.12 in  
44.000  
Soft hand-feel,  
smooth dynamic  
vibrant two-tone effect  
Residential & Contract use  
Medium/Hard Use  
17 COLOURS



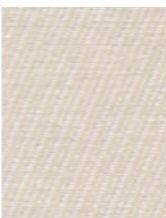
ADAMO & EVA - DEDAR

An exquisite quality of Italian-made cotton velvet that is soft, versatile and hard-wearing. A palette of 69 colours comprising striking, traditional and neutral shades.

WWW.DEDAR.COM

TYPE  
COMPOSITION  
WEIGHT  
WIDTH  
MARTINDALE  
SURFACE  
  
USE  
  
COLOURS

COTTON VELVET  
100%CO  
g/ml 630  
140 cm - 55.12 in  
50.000  
Soft hand-feel,  
smooth nap lively  
short-pile velour  
Residential & Contract use  
Medium use  
(SENSITIVE FABRIC)  
69 COLOURS



STEP - SAHCO

With its graphic design of parallel repeated ribs, Step is a modern interpretation of a classic twill rendered in chenille yarn. The yarn-dyed tonal colours create a subtle and sophisticated diagonal stripe on a textile that has a soft and gentle handle. Step is offered in a wide palette of twenty-three beautiful shades.

WWW.SAHCO.COM

TYPE  
COMPOSITION  
  
WEIGHT  
WIDTH  
MARTINDALE  
SURFACE  
  
USE  
COLOURS

CHENILLE TWILL  
48%COTTON, 30% VISCOSE,  
22% POLYESTER  
g/lin 890  
140 cm - 55.12 in  
40.000  
Soft hand-feel,  
geometric design  
Residential & Contract use  
Medium/Hard Use  
23 COLOURS

CONTRACT  
COLLECTION



SELECTED  
by  
FRIENDS & FOUNDERS

Friends & Founders presents an extended collection of sustainable upholstery minded for contract use, all suitable for Friends & Founders' collections of upholstered furniture. The majority of the collection bears the EU Ecolabel and offers a range of fabrics made of recycled materials or sustainably-produced leathers. The CONTRACT collection present a strong and wide selection of upholstery for hard use sourced from leading manufacturers with extra focus on environment, durability and maintenance. Our premium partners are KVADRAT / MAHARAM / NEVOTEX.



CONTRACT COLLECTION



REED - SAHCO

This upholstery fabric has a small, graphic design created by inter-weaving two contrast coloured yarns. The linen in the construction of Reed gives the fabric a grainy textured appearance, when mixed with cotton and viscose, which adds to its natural handle. Nine colour ways range from classic to more dynamic.

WWW.SAHCO.COM

TYPE	GEOMETRIC COTTON WEAVE
COMPOSITION	56% COTTON 26% VISCOSE 18% LINEN
WEIGHT	g/lin 1180
WIDTH	134 cm - 53 in
MARTINDALE	80.000
SURFACE	Natural handle, two-coloured, textured
USE	Residential & Contract use
COLOURS	Hard use 9 COLOURS



CLAY - SAHCO

Bringing together both natural beauty and a sense of finesse, the creative team have mixed colours of yarn in warp and weft to create an elegant yet casual fabric. The result has a unique structured surface that adds and extra dimension to any interior design scheme. With a back cloth that gives extra stability, Clay is perfect for upholstering furniture.

The colours are inspired by the designer's love of both art and interiors and include cool shades of cement, blue, and salvia but also the natural shades of wood and clay.

WWW.SAHCO.COM

TYPE	COTTON LINEN
COMPOSITION	76% LINEN 21% COTTON 3% POLYESTER
WEIGHT	g/lin 786
WIDTH	140 cm - 55.12 in
MARTINDALE	45.000
SURFACE	Natural handle, two-coloured, textured
USE	Residential & Contract use
COLOURS	Hard use 17 COLOURS



RE-WOOL - KVADRAT

Crafted using 45% recycled wool, Re-wool is a rich upholstery textile with a sustainable profile. The textile is partly made by reusing scraps from Kvadrat's yarn spinners in the UK. 'The idea was to create a both honest and environmentally friendly - textile with a poetic feel by recycling leftover material from Kvadrat's own production', explains designer Margrethe Odgaard.

Reminiscent of colourful stitchings on a darker background, Re-wool features exceptional depth of colour, creating a dynamic play on the textile's surface when applied to furniture.

WWW.KVADRAT.COM

TYPE	RECYCLED WOOL
COMPOSITION	45% RECYCLED WOOL 45% NEW WOOL WORSTED 10% NYLON
WEIGHT	g/lin 510
WIDTH	140 cm - 55.12 in
MARTINDALE	100.000
SURFACE	Natural handle, two-coloured, textured
USE	Residential & Contract use
COLOURS	Hard use 21 COLOURS



FOSS - KVADRAT

Foss is an upholstery textile with a vibrant yet simple expression. Created by Norwegian textile designer Tone Barnung and coloured by Danish designer Louise Sigvardt, it unites natural and man-made materials. Three to four different melange or uni coloured yarns - in different thicknesses - are combined in each colour way. The shiny viscose and thick linen yarns give the surface of Foss a subtle shimmer.

Foss also has a tactile feel, in addition to its sophisticated lustre. Though it is primarily made of wool, it offers the tactile dry touch usually associated with pure linen textiles.

WWW.KVADRAT.COM

TYPE	WOOL MELANGE
COMPOSITION	76% NEW WOOL WORSTED 11% VISCOSE 8% NYLON 5% LINEN
WEIGHT	g/lin 510
WIDTH	145 cm - 57 in
MARTINDALE	100.000
SURFACE	Silky handle, natural feel
USE	tactile touch Residential & Contract use
COLOURS	Hard use 29 COLOURS



VIDAR - KVADRAT

Originally designed by Fanny Aronsen, Vidar has been re-coloured by Raf Simons, with shades ranging from moss green, dark aubergine, ruby red and midnight blue through to brick and earth tones, and easy neutrals.

The gentle satin surface finish of the weave contrasts with the deep shadowy tones in the depths, giving a multifaceted richness to the intense colours in the range. Tightly woven, without the irregularities of the other bouclé fabrics within this collection, Vidar has an inviting texture, which variously recalls blackberries, orange peel or the comforting close-knit texture of a favourite sweater.

WWW.KVADRAT.COM

TYPE	WOOL BOUCLÉ
COMPOSITION	94% NEW WOOL 6% NYLON
WEIGHT	g/lin 765
WIDTH	140 cm - 55.12 in
MARTINDALE	100.000
SURFACE	Silky handle, tightly woven bouclé, textured
USE	Residential & Contract use
COLOURS	Hard use 41 COLOURS



RELATE - KVADRAT

Relate is a sophisticated twill weave upholstery textile designed by Patricia Urquiola made from Trevira CS, which has a soft hand resembling natural fibres.

The versatile palette for Relate comprises 35 colour ways and expresses confident colour combinations by combining warm notes with closely related nuances. Relate is suitable for contract and private use.

WWW.KVADRAT.COM

TYPE	TWILL
COMPOSITION	100% TREVIRA CS
WEIGHT	g/lin 450
WIDTH	140 cm - 55.12 in
MARTINDALE	80.000
SURFACE	Plain geometric design
USE	Residential & Contract use
COLOURS	Hard use 35 COLOURS



HARALD - KVADRAT

A closely-woven, very short-pile velour, Harald brings the fresh, soft texture of cotton to a direction less velvety textile. The intense colour offered by this matte velour places the focus strongly onto the silhouette of the upholstered object, emphasising its shape and contours.

Harald comes in a new colour palette conceived by Raf Simons offering a particularly large selection of vivid keynote tones, including primrose yellow, burnt orange, raspberry, lavender, aubergine and dark mint green, alongside more natural tones. Harald is a durable fabric suitable for use as curtains as well as in upholstery.

WWW.KVADRAT.COM

TYPE	COTTON VELVET
COMPOSITION	100% COTTON
WEIGHT	g/lin 520
WIDTH	140 cm - 55.12 in
MARTINDALE	100.000
SURFACE	Soft hand-feel, smooth nap lively
USE	short-pile velour Residential & Contract use
COLOURS	Medium use (SENSITIVE FABRIC) 39 COLOURS



SAVANNA - KVADRAT

Savanna and Medina are upholstery textiles, which combine different types of yarns and materials to offer distinctive depth and richness. Both have been created by acclaimed Danish designers, Aggebo & Henriksen.

The designers blended yarns with contrasting characters to give the fabric elegant, sophisticated and individual structures: both textiles fuse shiny yarns, matt yarns and bouclé yarns. As a result, they each feature a rich, irregular surface, which reveals an eye-catching play of details when seen from close up.

WWW.KVADRAT.COM

TYPE	BOUCLÉ
COMPOSITION	34% POLYESTER 31% NEW WOOL 26% POLYACRYLIC 4% COTTON 3% NYLON 2% LINEN
WEIGHT	g/lin 681
WIDTH	140 cm - 55.12 in
MARTINDALE	45.000
SURFACE	textured feel, Rich irregular surface
USE	tactile touch Residential & Contract use
COLOURS	Medium/Hard use 12 COLOURS



FIORD 2 - KVADRAT

Fiord is a versatile woollen upholstery textile with a subtle three-dimensional look. Originally designed by Norwegian designer Tone Barnung, it comes in refreshed colours created in collaboration with Louise Sigvardt.

The construction of Fiord combines a mélange yarn with a uni coloured yarn that creates pearl-like dots that play across the textile's surface. This sophisticated expression reflects a key source of inspiration behind the design: moonlight glittering like pearls on the rippling waters of a Norwegian fjord.

WWW.KVADRAT.COM

TYPE	WOOL MELANGE
COMPOSITION	92% NEW WOOL WORSTED 8% NYLON
WEIGHT	g/lin 500
WIDTH	140 cm - 55.12 in
MARTINDALE	60.000
SURFACE	textured feel, uni coloured 3D look
USE	tactile touch Residential & Contract use
COLOURS	Hard use 39 COLOURS



SUNNIVA 3 - KVADRAT

Sunniva blends colours and surface textures to create a rich fabric. Each colour way brings together two tones of wool, woven into a fine, tweed-like pattern which is then given a glossy sheen due to the linen viscose yarn.

Sunniva 3 is offered in thirty-five sophisticated colours. Alongside a wide selection of neutrals and basics is a warm group of soft browns and clay and brick tones as well as a cooler selection of greys and greens, ranging from light aqua to dark forest. Additional hues of pink and dark red are also included creating a palette that is grown up, masculine and elegant.

WWW.KVADRAT.COM

TYPE	NATURAL TWEED
COMPOSITION	58% NEW WOOL 25%VISCOSE 8% LINEN 5% NYLON 4% POLYESTER
WEIGHT	g/lin 593
WIDTH	140 cm - 55.12 in
MARTINDALE	50.000
SURFACE	textured feel, Rich irregular surface
USE	tactile touch Residential & Contract use
COLOURS	Medium/Hard use 35 COLOURS

LOOP - KIRKBY



A staple in Kirkby Design's library of sophisticated plains, Loop, a flattened bouclé weave, is offered in a comprehensive palette of on-trend shades including Petal, Evergreen and Olive, as well as a considered selection of modern neutrals.

WWW.KIRKBYDESIGN.COM

TYPE	BOUCLÉ
COMPOSITION	46% PC 23% WO 15% CO PA 4% PL
WIDTH	140 cm - 55.12 in
MARTINDALE	60.000
SURFACE	Natural handle, two-coloured, textured
USE	Residential & Contract use Medium/Hard Use
COLOURS	25 COLOURS

MERIT - MAHARAM



MERIT is an upholstery textile designed by Maharam Design Studio. Predominantly crafted from recycled material, it offers a rich texture and the pronounced colour depth traditionally associated with wool. Merit has a soft, dimensional surface. Voluminous yarns are held in place by fine mélange yarns. Weathered and solid fibre effects are produced using two different types of dye, which delivers eye-catching colour richness.

WWW.MAHARAM.COM

TYPE	RECYCLED
COMPOSITION	76% POST-CONSUMER RECYCLED POLYESTER, 24% POLYESTER
WEIGHT	g/lin 510
WIDTH	140 cm - 55.12 in
MARTINDALE	100.000
SURFACE	Stain Repellent two-coloured, textured
USE	Contract hard use
COLOURS	43 COLOURS

EROS - NEVOTEX



EROS velvet chenille-like fabric in the lower price range is suitable for contract use and projects with high quantities.

It is highly durable and available in a wide range of colours. Eros fabric is characterized by its soft and velvety feel and its slightly crushed surface creates a playful expression.

WWW.NEVOTEX.COM

TYPE	VELVET CHENILLE
COMPOSITION	51% ACRYLIC, 40% POLYESTER, 9% VISCOSE
WEIGHT	560 gr/lin
WIDTH	140 cm - 55.12 in
MARTINDALE	50.000
SURFACE	Soft hand-feel, smooth nap lively , slightly crushed
USE	Contract hard use
COLOURS	43 COLOURS

BARNUM - NEVOTEX



BARNUM is a cotton bouclé fabric, with references to the 70s. Comfortable and bulky with a soft hand-feel.

Textured and soft to the touch, bouclé fabrics combines strength with a comfortable hand-feel. Irregularity is a vital element of the fabric's preciousness. BARNUM is offered in a palette of 16 beautiful shades.

WWW.NEVOTEX.COM

TYPE	BOUCLÉ
COMPOSITION	45% COTTON, 15% WOOL, 13% ACRYLIC, 19% VISCOSE, 8% NYLON
WEIGHT	g/lin 680
WIDTH	140 cm - 55.12 in
MARTINDALE	60.000
SURFACE	Soft hand-feel, bulky rich texture
ENVIRONMENT	OEKO-TEX 100
USE	Contract hard use
COLOURS	16 COLOURS

SELECTED COLLECTION

The requirements and standards for furniture upholstery change from country to country and depend on intended use. Criteria may be set for sustainability, fire safety, environmental impact, maintenance, or aesthetics in which design and expression work together with fabric choice. Friends & Founders’ SELECTED upholstery collections in price groups 1 through 7 have been tested in order to guarantee the material and its workmanship according to our own high standards.

PREFERRED SUPPLIERS

Customers may also specify collections from our partners that are not included in the SELECTED range. Note that all upholstery must be tested and approved by our quality department before processing the order.

COM / COL

We also accommodate COM/COL sourcing. Customers own material (COM / COL) need to be tested and approved by Friends & Founders according to testing procedures. Minimum test samples size 30 x 30 cm (smaller samples will be rejected). Prolonged lead time may be expected (approximately + 2 weeks for test and approval). Surcharge / administration fee for handling test samples may occur. COM / COL orders may be subject to a minimum order quantity per item.

# PRODUCTION AND ENVIRONMENT



WE BELIEVE IN THE FUTURE.  
TOGETHER WE CAN  
MAKE A DIFFERENCE

RASMUS HILDEBRAND  
CEO and co-founder of Friends & Founders

The entire Friends & Founders collection is manufactured in European countries and especially Scandinavia. We strive to keep production as local as possible and believe in supporting manufacturing that is closer to home, besides lessening environmental impact, producing more locally means we can better guarantee quality and safe working environments.

Our collection today is stronger than ever. An early decision to manufacture in Europe and especially in Scandinavia turned out to be a wise choice for several reasons. First, it has allowed us to closely manage the quality and crafting processes for our products. And that control allows us more flexibility in meeting a customer's specific requirements. It also means shorter lead times.

Our products meet the high standards of the contract market. Even retail customers benefit from these strict guarantees on quality and durability. We invite customers and end-users to get in touch. A process where we work closely together always presents the best opportunities.

GOOD COLLABORATION  
SITS AT THE HEART OF GREAT  
IDEAS AND ACCOMPLISHMENTS.

And we hope our name Friends & Founders is a reminder of this invitation to work together.

Thinking of sustainability from the start of the design process has been key to Friends & Founders' business. We create designs for the future. That means creating products that will physically endure. It also means assessing environmental impact and striving always for improvement. Both of those considerations inform the selection of our raw materials and production steps.

We have worked specifically on transportation processes to improve efficiencies from factory to client. Recently Friends & Founders developed a new concept for transportation and packaging optimization, OPTS, aimed at decreasing environmental impact.

Friends & Founders strives to avoid producing overstock in order to optimize consumption of raw materials and reduce waste. With that in mind it's natural that we maintain a make-to-order production cycle. It provides another way to promote a healthier consumer cycle and to work against a culture of rapid consumerism. We believe in the future. Together we can make a difference with our consumption choices.

COLLECTION OVERVIEW

PIPE CHAIR



BLACK  
SAHCO  
REED  
006



BRASS  
NEVOTEX  
CHALLENGER  
BRANDY



CHROME  
DEDAR  
KARAKORUM  
003

DESIGN BY IDA LINEA HILDEBRAND 2014

PIPE CHAIR, featured in full upholstery. Frame options in powder coated BLACK or BRASS / CHROME plated steel.

Upholstery available in a wide range of fabrics and leathers suitable for contract and residential use. Experience the SELECTED COLLECTION in the upholstery catalogue.

DIMENSIONS  
H 81 / W 59 / D 55 cm  
H 31.9 / W 23.2 / D 21.7 in

SEAT HEIGHT 46 cm / 18.1 in

THE COLLECTION FEATURES A DINING CHAIR, COUNTER CHAIR, BARSTOOL AND LOUNGE CHAIR

PIPE WOOD



BLACK  
DEDAR  
KARAKORUM  
003



SMOKED  
DEDAR  
KARAKORUM  
003

DESIGN BY IDA LINEA HILDEBRAND 2019

PIPE WOOD, featured in full upholstery. Frame options in BLACK or SMOKED wood.

Upholstery available in a wide range of fabrics and leathers suitable for contract and residential use. Experience the SELECTED COLLECTION in the upholstery catalogue.

DIMENSIONS  
H 81 / W 59 / D 55 cm  
H 31.9 / W 23.2 / D 21.7 in

SEAT HEIGHT 46 cm / 18.1 in

PIPE COUNTER CHAIR



BLACK  
NEVOTEX  
DAKAR LEATHER  
0842



BRASS  
COM  
KVADRAT  
MASAI  
0242

DESIGN BY IDA LINEA HILDEBRAND 2014

PIPE COUNTER chair, featured in full upholstery. Frame options in powder coated BLACK or BRASS / CHROME plated steel.

Upholstery available in a wide range of fabrics and leathers suitable for contract and residential use. Experience the SELECTED COLLECTION in the upholstery catalogue.

DIMENSIONS  
H 100 / W 59 / D 55 cm  
H 39.4 / W 23.2 / D 21.7 in

SEAT HEIGHT 65 cm / 25.6 in

THE COLLECTION FEATURES A DINING CHAIR, COUNTER CHAIR, BARSTOOL AND LOUNGE CHAIR

PIPE HIGH CHAIR



BRASS  
COM  
KVADRAT  
MASAI  
0242



CHROME  
COM  
KVADRAT  
MASAI  
0242

DESIGN BY IDA LINEA HILDEBRAND 2014

PIPE BAR chair, featured in full upholstery. Frame options in powder coated BLACK or BRASS / CHROME plated steel.

Upholstery available in a wide range of fabrics and leathers suitable for contract and residential use. Experience the SELECTED COLLECTION in the upholstery catalogue.

DIMENSIONS  
H 110 / W 59 / D 55 cm  
H 43.3 / W 23.2 / D 21.7 in

SEAT HEIGHT 75 cm / 29.5 in

THE COLLECTION FEATURES A DINING CHAIR, COUNTER CHAIR, BARSTOOL AND LOUNGE CHAIR

PIPE LOUNGE



DEDAR  
A JOY  
002



DEDAR  
XYLOPHONE  
002



SAHCO  
REED  
006



SØRENSEN  
ROYAL NUBUCK  
LAVA

DESIGN BY IDA LINEA HILDEBRAND 2015

PIPE LOUNGE, featured in full upholstery. Available with fixed base or return swivel.

Upholstery available in a wide range of fabrics and leathers suitable for contract and residential use.  
Experience the SELECTED COLLECTION in the upholstery catalogue.

DIMENSIONS  
H 77.5 / W 83.5 / D 78 cm  
H 30.5 / W 32.9 / D 30.7 in  
SEAT HEIGHT 41 cm / 16.1 in

THE COLLECTION FEATURES A DINING CHAIR, COUNTER CHAIR, BARSTOOL AND LOUNGE CHAIR

PIPE LOUNGE SWIVEL



DEDAR  
TIGER MOUNTAIN  
001



DEDAR  
COM  
VELVET



KVADRAT  
VIDAR  
SELECTED S2



DEDAR  
KARAKORUM  
001

DESIGN BY IDA LINEA HILDEBRAND 2015

PIPE LOUNGE SWIVEL, featured in full upholstery. Available with fixed base or return swivel.

Upholstery available in a wide range of fabrics and leathers suitable for contract and residential use.  
Experience the SELECTED COLLECTION in the upholstery catalogue.

DIMENSIONS  
H 77.5 / W 83.5 / D 78 cm  
H 30.5 / W 32.9 / D 30.7 in  
SEAT HEIGHT 42.5 cm / 16.7 in

THE COLLECTION FEATURES A DINING CHAIR, COUNTER CHAIR, BARSTOOL AND LOUNGE CHAIR

NOVEL



SAHCO  
REED  
006



DEDAR  
KARAKORUM  
001

DESIGN BY IDA LINEA HILDEBRAND 2018

NOVEL chair, featured in full upholstery. Available in optional one colour or in Friends & Founders' SELECTED 2-coloured design.

Upholstery available in a wide range of fabrics and leathers suitable for contract and residential use.  
Experience the SELECTED COLLECTION in the upholstery catalogue.

DIMENSIONS  
H 73 / W 65 / D 59 cm  
H 28.7 / W 25.6 / D 23.2 in  
SEAT HEIGHT 44 cm / 17.3 in

FF CHAIR / CUBIC



BLACK  
SØRENSEN  
SWOON  
COGNAC

BLACK  
NEVOTEX  
DAKAR  
BLACK



CHROME  
SØRENSEN  
SWOON  
COGNAC

CHROME  
DEDAR  
A JOY  
001

FF CHAIR / ROUNDED



DESIGN BY IDA LINEA HILDEBRAND 2018

FF CHAIR, featured with upholstered seat and back. Available in optional CUBIC or ROUNDED design. Metal frame available in powder coated BLACK or CHROME plated steel.

Upholstery available in a wide range of fabrics and leathers suitable for contract and residential use. Experience the SELECTED COLLECTION in the upholstery catalogue.

DIMENSIONS  
H 75 / W 55 / D 55 cm  
H 29.5 / W 21.7 / D 21.7in

SEAT HEIGHT 46 cm / 18.1 in

THE COLLECTION FEATURES A DINING CHAIR AND CANTILEVER CHAIR

FF CANTILEVER / CUBIC



BLACK  
SØRENSEN  
DUNES  
ANTHRAZITE

BLACK  
SAHCO  
REED  
006



CHROME  
SØRENSEN  
DUNES  
ANTHRAZITE

CHROME  
SØRENSEN  
ROYAL NUBUCK  
OFF WHITE

DESIGN BY IDA LINEA HILDEBRAND 2018

FF CANTILEVER CHAIR, featured with upholstered seat and back. Available in optional CUBIC or ROUNDED design. Metal frame available in powder coated BLACK or CHROME plated steel.

Upholstery available in a wide range of fabrics and leathers suitable for contract and residential use. Experience the SELECTED COLLECTION in the upholstery catalogue.

DIMENSIONS  
H 75 / W 55 / D 65 cm  
H 29.5 / W 21.7 / D 25.6in

SEAT HEIGHT 46 cm / 18.1 in

THE COLLECTION FEATURES A DINING CHAIR AND CANTILEVER CHAIR

FF CANTILEVER / ROUNDED



MY CHAIR



BLACK  
OPEN BACK

MY CHAIR NET



BLACK  
STRING WEAVE BACK

DESIGN BY IDA LINEA HILDEBRAND 2013

MY CHAIR armchair in powder coated steel. Featured with an open or string weave back. Available with a super durable / UV resistance coating for sunny environments. INDOOR & OUTDOOR

Optional cushions in outdoor fabrics from DEDAR.

DIMENSIONS  
H 81 / W 58.5 / D 50 cm  
H 31.9 / W 23 / D 19.7in

SEAT HEIGHT 46 cm / 18.1 in

THE COLLECTION FEATURES A CHAIR AND BENCH FOR INDOOR AND OUTDOOR USE.

MY CUSHION



MY 01

DEDAR  
BLACK & WHITE



MY 02

DEDAR  
BOUCLÉ  
BEIGE



MY 03

DEDAR  
BLACK & WHITE  
STRIPES

DESIGN BY IDA LINEA HILDEBRAND 2014

Cushion in foam, fully upholstered. INDOOR & OUTDOOR

Upholstery available in a range of exclusive fabrics in outdoor quality, suitable for contract and residential use. Experience the SELECTED COLLECTION in the upholstery catalogue.

DIMENSIONS  
DIA 41 / H 2 cm  
DIA 16.1 / H 0.8 in

OUR BENCH



BLACK  
STRING WEAVE BACK



DESIGN BY IDA LINEA HILDEBRAND 2013

OUR BENCH in powder coated steel. The two-and-a-half seater sofa is featured in string weave back. Available with a super durable / UV resistance coating for sunny environments. INDOOR & OUTDOOR

Optional cushions in outdoor fabrics from DEDAR.

DIMENSIONS  
H 81 / W 133.5 / D 50  
H 31.9 / W 52.6 / D 19.7in

SEAT HEIGHT 46 cm / 18.1 in

THE COLLECTION FEATURES A CHAIR AND BENCH FOR INDOOR AND OUTDOOR USE

OUR CUSHION



OUR 01

DEDAR  
BLACK & WHITE



OUR 02

DEDAR  
BOUCLÉ  
BEIGE



OUR 03

DEDAR  
BLACK & WHITE  
STRIPES

DESIGN BY IDA LINEA HILDEBRAND 2014

Cushion in foam, fully upholstered. INDOOR & OUTDOOR

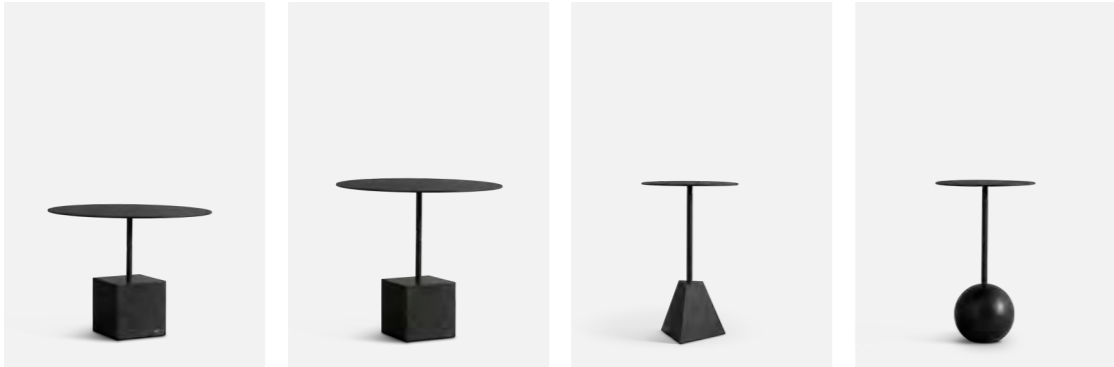
Upholstery available in a range of exclusive fabrics in outdoor quality, suitable for contract and residential use. Experience the SELECTED COLLECTION in the upholstery section.

DIMENSIONS  
115 X 41 / H 2 cm  
45.3 X 16.1 / H 0.8 in

KNOCKOUT LOUNGE TABLE



WHITE  
WHITE TOP  
MARBLE BASE  
PELE TIGRE



BLACK  
BLACK TOP  
MARBLE BASE  
BELGIUM BLUE



GREEN  
BLACK TOP  
MARBLE BASE  
KOLMÅRDEN



TRAVERTINE  
BLACK TOP  
MARBLE BASE  
TRAVERTINE

DESIGN BY IDA LINEA HILDEBRAND 2013

KNOCKOUT TABLE featured in untreated selected Swedish or European marble, honed satin finish. Top in powder coated solid aluminium. Available with a super durable / UV resistance coating for sunny environments. INDOOR & OUTDOOR

DIMENSIONS	cm	inches
SQUARE HIGH	DIA 60 / H 55	DIA 23.6 / H 21.7
SQUARE LOW	DIA 60 / H 45	DIA 23.6 / H 17.7
PYRAMID	DIA 35 / H 55	DIA 13.8 / H 21.7
ROUND	DIA 35 / H 55	DIA 13.8 / H 21.7

THE COLLECTION FEATURES LOUNGE TABLE, HIGH TABLE AND DINING TABLE

KNOCKOUT HIGH TABLE



BLACK  
BLACK TOP  
MARBLE BASE  
BELGIUM BLUE



DESIGN BY IDA LINEA HILDEBRAND 2013

KNOCKOUT HIGH TABLE featured in untreated selected Swedish or European marble, honed satin finish. Top in powder coated solid aluminium. Available with a super durable / UV resistance coating for sunny environments. INDOOR & OUTDOOR

DIMENSIONS

DIA 60 / H 95 cm
DIA 23.6 / H 37.4 in

THE COLLECTION FEATURES LOUNGE TABLE, HIGH TABLE AND DINING TABLE

KNOCKOUT DINING TABLE



WHITE  
WHITE STEM  
MARBLE  
CARRARA



WHITE  
CHROME  
CHROME STEM  
MARBLE  
CARRARA



BLACK  
BLACK STEM  
MARBLE  
MARQUINA



BLACK  
CHROME  
CHROME STEM  
MARBLE  
MARQUINA

DESIGN BY IDA LINEA HILDEBRAND 2013

KNOCKOUT DINING TABLE featured in untreated selected European marble, honed satin finish. Stem available in powder coated BLACK / WHITE or CHROME plated steel.

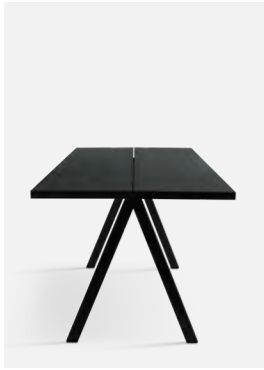
DIMENSIONS

DIA 110 / H 75 cm
DIA 43.3 / H 29.5 in

THE COLLECTION FEATURES LOUNGE TABLE, HIGH TABLE AND DINING TABLE

*Reservations are made for product sales material imagery that deviates from the sold item. The appearance of natural raw materials changes from time to time.*

SAW SOLID



BLACK  
2 PARTS TOP  
SOLID ASH



DESIGN BY IDA LINEA HILDEBRAND 2013

SAW TABLE, available in solid ash, stained satin finish. Frame in black powder coated metal. The collection is featured in BLACK or SMOKED ASH, sourced from FSC-certified forests.

TESTED AND APPROVED ACCORDING TO THE HIGHEST EUROPEAN STANDARDS FOR STRENGTH / DURABILITY AND STABILITY (EN15372:2008)

STANDARD DIMENSIONS

200 x 80 cm	78.7 x 31.5 in
250 x 95 cm	98.4 x 37.4 in
300 x 100 cm	118.1 x 39.4 in
340 x 110 cm	133.9 x 43.3 in

HEIGHT  
75 cm / 29.5 in

THE COLLECTION FEATURES DINING AND WORK TABLES IN BOTH STANDARD AND CUSTOM SIZES

SAW ROUNDED



BLACK  
ROUNDED WOOD  
ASH VENEER



DESIGN BY IDA LINEA HILDEBRAND 2014

SAW TABLE, available in ash veneer, stained satin finish. Frame in black powder coated metal. The collection is featured in BLACK ASH, sourced from FSC-certified forests.

TESTED AND APPROVED ACCORDING TO THE HIGHEST EUROPEAN STANDARDS FOR STRENGTH / DURABILITY AND STABILITY (EN15372:2008)

STANDARD DIMENSIONS

230 X 90 cm
90.6 x 35.4 in

HEIGHT  
75 cm / 29.5 in

THE COLLECTION FEATURES DINING AND WORK TABLES IN BOTH STANDARD AND CUSTOM SIZES

SAW MARBLE



WHITE  
MARBLE  
PELE DE TIGRE / CARRARA



DESIGN BY IDA LINEA HILDEBRAND 2014

SAW TABLE, available in untreated selected European marble, honed satin finish. Frame in black powder coated metal. The collection is featured in WHITE or BLACK MARBLE.

FRAME TESTED AND APPROVED ACCORDING TO THE HIGHEST EUROPEAN STANDARDS FOR STRENGTH / DURABILITY AND STABILITY (EN15372:2008)

STANDARD DIMENSIONS

230 X 90 cm
90.6 x 35.4 in

HEIGHT  
75 cm / 29.5 in

THE COLLECTION FEATURES TABLES AND DESKS IN BOTH STANDARD AND CUSTOM SIZES

*Reservations are made for product sales material imagery that deviates from the sold item. The appearance of natural raw materials changes from time to time.*

SAW DESK MARBLE



WHITE  
MARBLE  
PELE DE TIGRE / CARRARA



BLACK  
MARBLE  
MARQUINA



DESIGN BY IDA LINEA HILDEBRAND 2014

SAW DESK TABLE, available in untreated selected European marble, honed satin finish. Frame in black powder coated metal. The collection is featured in WHITE or BLACK MARBLE or in TRAVERTINE.

FRAME TESTED AND APPROVED ACCORDING TO THE HIGHEST EUROPEAN STANDARDS FOR STRENGTH / DURABILITY AND STABILITY (EN15372:2008)

STANDARD DIMENSIONS

150 X 60 cm
59.1 x 23.6 in

HEIGHT  
75 cm / 29.5 in

THE COLLECTION FEATURES TABLES AND DESKS IN BOTH STANDARD AND CUSTOM SIZES

*Reservations are made for product sales material imagery that deviates from the sold item. The appearance of natural raw materials changes from time to time.*

POND

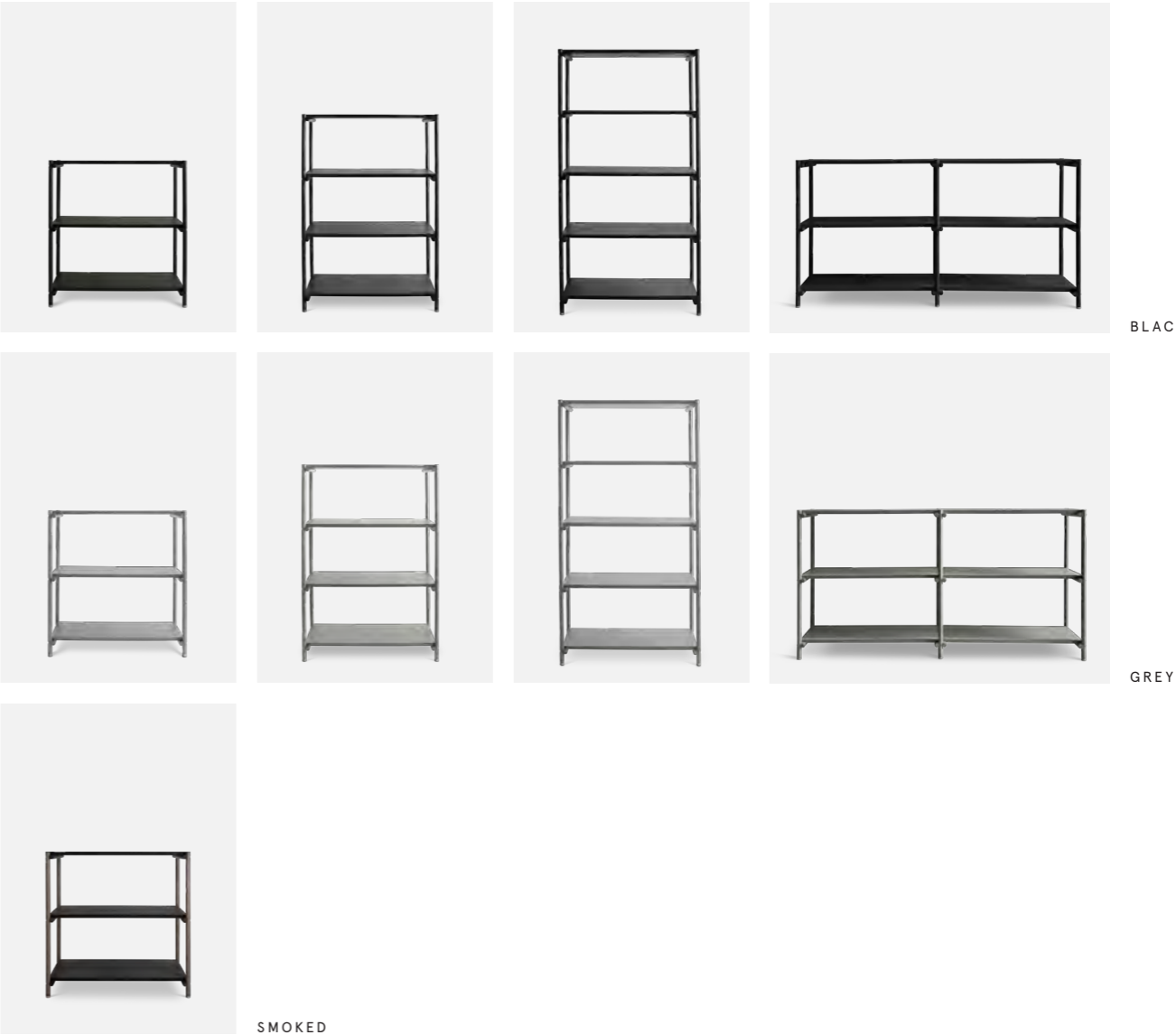


DESIGN BY IDA LINEA HILDEBRAND 2017

POND LOUNGE TABLE, featured in hardened glass, high gloss finish. UV glued / seamless joints. Available in three translucent colours – CLEAR, GREY SMOKE, and BRONZE.

DIMENSIONS	cm	inches
SMALL	DIA 45 / H 45	DIA 17.7 / H 17.7
LARGE	DIA 75 / H 35	DIA 29.5 / H 13.8

SHELVISH



DESIGN BY IDA LINEA HILDEBRAND 2013

SHELVISH COLLECTION, available in ash wood, stained satin finish. Incl brass details. Distance between shelves 330 mm (A4). All units can be connected in order to build a custom system. The collection is featured in BLACK, GREY or SMOKED ASH, sourced from FSC-certified forests.

DIMENSIONS	cm	inches
SMALL	H 80 x 80 x 40	H 31.5 x 31.5 x 15.7
MEDIUM	H 115 x 80 x 40	H 45.3 x 31.5 x 15.7
HIGH	H 150 x 80 x 40	H 59.1 x 31.5 x 15.7
CONNECTED	H 80 x 160 x 40	H 31.5 x 63.0 x 15.7

PARIS NIGHTS COLLECTION



PENDANT



DESK



FLOOR

DESIGN BY IDA LINEA HILDEBRAND 2019

PARIS NIGHTS LIGHTING COLLECTION, featured in NIGHT BLACK satin finish metal and white mouth blown opal glass. All fixtures fitted with textile cords. Incl black metal canopy for ceiling suspension. Dimmable. Source LED G9 / MAX 5W 230V. Light source included. INDOOR USE ONLY

DIMENSIONS	cm	inches
PENDANT SMALL	H 34 x DIA 25	H 13.4 x DIA 9.8
PENDANT LARGE	H 40 x DIA 34	H 15.7 x DIA 13.4
DESK	H 47.5 x DIA 25	H 18.7 x DIA 9.8
FLOOR	H 125 x DIA 34	H 49.2 x DIA 13.4

THE COLLECTION FEATURES PENDANTS, DESK LAMPS, AND FLOOR LAMPS

LA LAMPE COLLECTION



PENDANT



WALL



FLOOR

WHITE  
BLACK



FLOOR

SWEDISH KOLMÅRDEN  
TRAVERTINE



DESIGN BY IDA LINEA HILDEBRAND 2013

LA LAMPE LIGHTING COLLECTION, featured in NIGHT BLACK satin finish metal. Floor base in selected European marble, honed satin finish. All fixtures fitted with textile cords. Incl black metal canopy for ceiling suspension. Dimmable. Source E27 / MAX 20W 230V (Light source is not included). INDOOR USE ONLY

DIMENSIONS	cm	inches
PENDANT	H 11 x DIA 15	H 4.3 x DIA 5.9
WALL	H 60 x 30	H 23.6 x 11.8
FLOOR	H 130 x 60	H 51.2 x 23.6

THE COLLECTION FEATURES PENDANTS, WALL LAMPS, AND FLOOR LAMPS

BOXER DESK



DESIGN BY IDA LINEA HILDEBRAND 2019

BOXER LIGHTING COLLECTION, featured in NIGHT BLACK satin finish metal. Shade in white mouth blown opal glass. Base in selected European marble, honed satin finish. All fixtures fitted with textile cords. Dimmable. Source LED G9 / MAX 5W 230V. Light source included. INDOOR USE ONLY

DIMENSIONS	cm	inches
DESK	H 50 x 14	H 19.7 x 5.5

THE COLLECTION FEATURES DESK LAMPS AND FLOOR LAMPS

BOXER FLOOR



WHITE

PELE TIGRE



BLACK

BELGIUM BLUE



GREEN

SWEDISH KOLMÅRDEN



TRAVERTINE

BEIGE

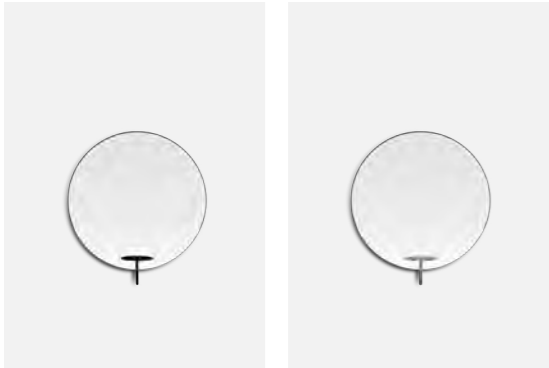
DESIGN BY IDA LINEA HILDEBRAND 2019

BOXER LIGHTING COLLECTION, featured in NIGHT BLACK satin finish metal. Shade in white mouth blown opal glass. Base in selected European marble, honed satin finish. All fixtures fitted with textile cords. Dimmable. Source LED G9 / MAX 5W 230V. Light source included. INDOOR USE ONLY

DIMENSIONS	cm	inches
FLOOR	H 120 x 21.5	H 47.2 x 8.5

THE COLLECTION FEATURES DESK LAMPS AND FLOOR LAMPS

MIRÓ MIRÓ COLLECTION



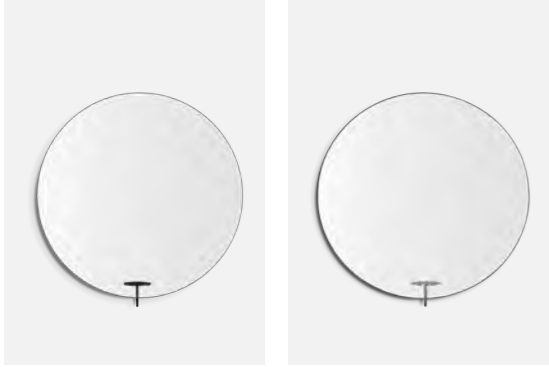
CLEAR



GREY MIST



BRONZE



CLEAR LARGE

DESIGN BY IDA LINEA HILDEBRAND 2015

MIRÓ MIRÓ COLLECTION ranges mirrors for wall mounting with a small round table for your favourite artefacts.

Featured in CLEAR glass or shaded with a warm BRONZE or sophisticated GREY SMOKE tint. Available in a variety of sizes and different shapes. The oval versions have been designed so they may be mounted both horizontally and vertically. The detachable table is available in BLACK or in BRASS.

DIMENSIONS	cm	inches
ROUND	DIA 50	DIA 19.7
ROUND LARGE	DIA 80	DIA 31.5
OVAL VERTICAL	H 100 x 50	H 39.4 x 19.7
OVAL HORIZONTAL	H 50 x 100	H 19.7 x 39.4

ARC COLLECTION



CLEAR



GREY MIST



DESIGN BY IDA LINEA HILDEBRAND 2016

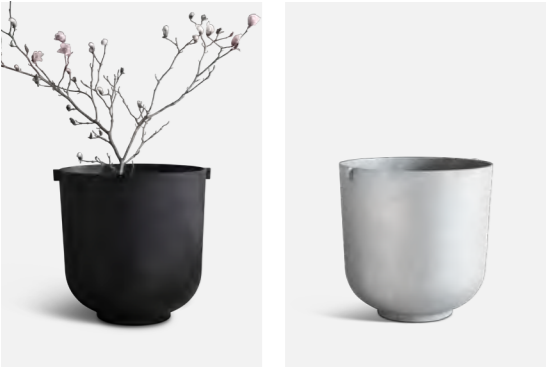
ARC COLLECTION ranges arc shaped mirrors for wall mounting. Featured in CLEAR glass or shaded with a sophisticated GREY SMOKE tint.

DIMENSIONS	cm	inches
SMALL	200 x 65	78.7 x 25.6
LARGE	230 x 80	90.6 x 31.5

CASTLE COLLECTION



SMALL



MEDIUM



LARGE

DESIGN BY IDA LINEA HILDEBRAND 2013

CASTLE PLANTER COLLECTION made of light weight 100% recycled aluminium, uniquely sand casted by hand.

Available in super durable / UV resistance coating for sunny environments. The collection is featured in BLACK or RAW blasted textured finish. Optional drainage - predefined for drilling.  
INDOOR & OUTDOOR

DIMENSIONS	cm	inches
SMALL	H 30 x DIA 60	H 11.8 x DIA 23.6
MEDIUM	H 60 x DIA 60	H 23.6 x DIA 23.6
LARGE	H 50 x DIA 120	H 19.7 x DIA 47.2

STAND OUT COLLECTION



STAND OUT  
MARBLE BASE  
BELGIUM BLUE

DESIGN BY IDA LINEA HILDEBRAND 2018

STAND OUT COAT STAND, featured in powder coated steel and BLACK European marble. Optional hangers in powder coated string metal.

DIMENSIONS

200 x 65 x 20 cm  
78.7 x 25.6 x 7.9 in

## CONTACT

[info@friendsfounders.com](mailto:info@friendsfounders.com)